

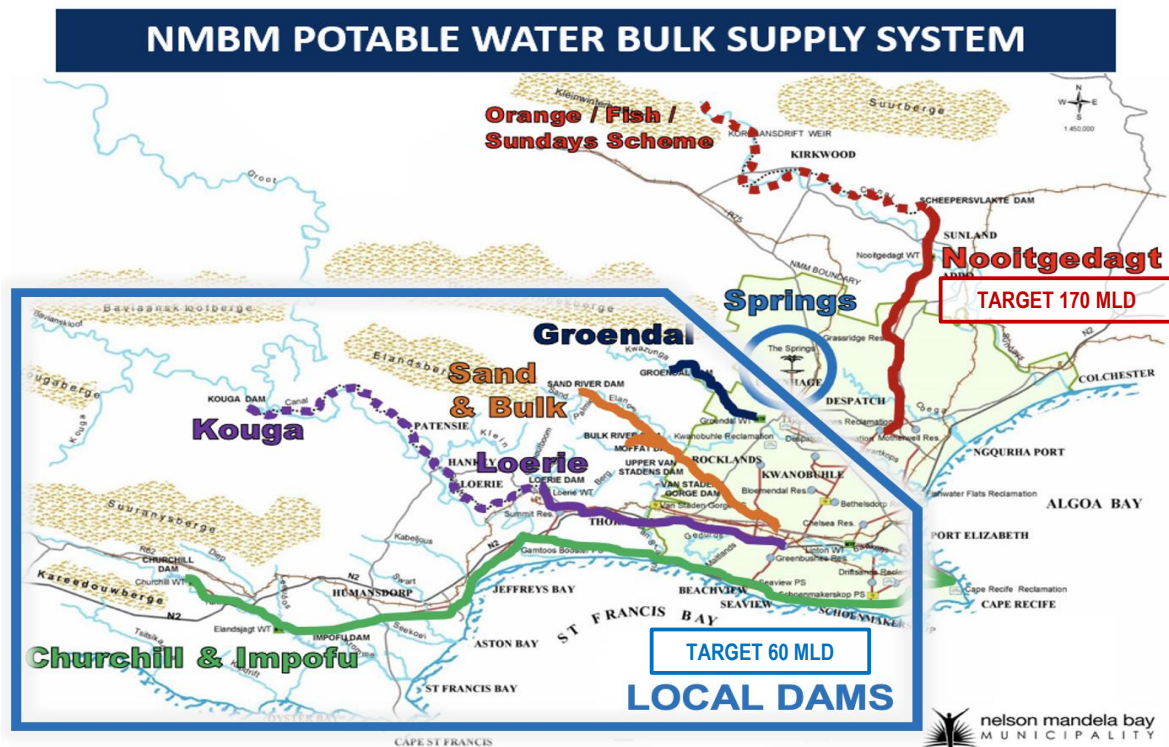
# WATER SUPPLY & USAGE STATISTICS

as at day, Tuesday 28 March 2023

TOTAL DAM STORAGE	CHANGE FROM A WEEK AGO	WATER PRODUCED (SEVEN-DAY AVERAGE)
13.24%	+0.19%	288 MLD

**NMBM TARGET DEMAND = 230 MILLION LITRES PER DAY (MLD)**

58 MLD USED OVER TARGET!



\* Note that the targets consider infrastructure reliability, system interconnectivity, and the recovery of local dams.

ONLY 7.88% AVAILABLE LOCAL DAM STORAGE!

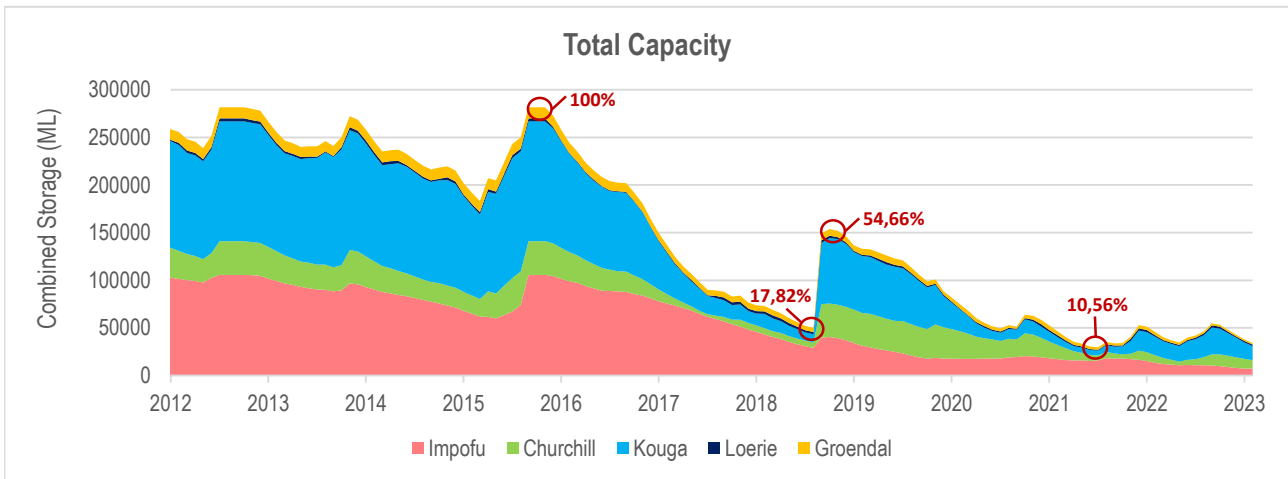
System	Dam	Storage capacity (ML)	Current storage (%)	Dead storage (%)	Available storage (%)	Available water (ML)
Kromme	Churchill	35,240	25.72	7.5	18.22	6,421
	Impofu	105,757	6.84	7.0	0.00	0
Kouga	Loerie	3,026	48.08	19.0	29.08	880
	Kouga	125,910	13.97	3.3	10.67	13,435
Groendal	Groendal	11,638	16.77	4.2	12.57	1,463
Total		281,571	13.24	5.4	7.88	22,198

## WHEN WILL LOCAL DAMS RUN DRY?

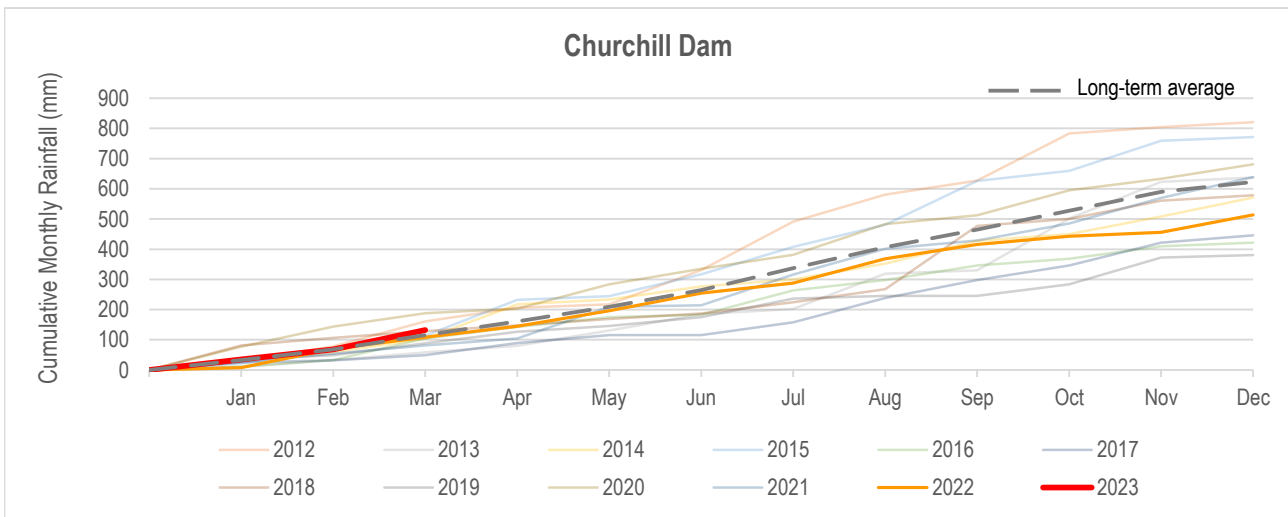
System	Dam	Available water (ML)	RESTRICTED		ACTUAL	
			Usage (MLD)	Water remaining (Days)	Usage (MLD)	Water remaining (Days)
Kromme	Churchill	6,421	31	207	31	207
	Impofu	0				
Kouga	Loerie	880	95	151	95	151
	Kouga	13,435				
Groendal	Groendal	1,463	5	293	<b>6</b>	244

\* Abstraction from Kouga Dam (95MLD) includes the NMBM's allocation from Loerie Dam (41MLD), Gamtoos Irrigation Board (33MLD), Hankey & Patensie (2MLD), direct irrigators and canal losses.

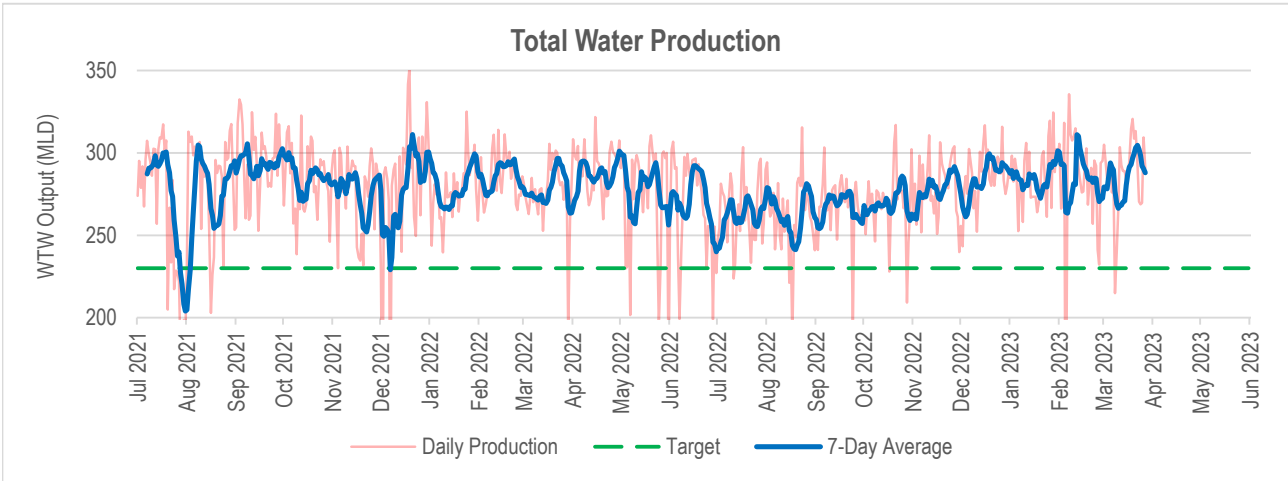
## LOCAL DAM STORAGE



## RAINFALL IN CATCHMENT AREAS

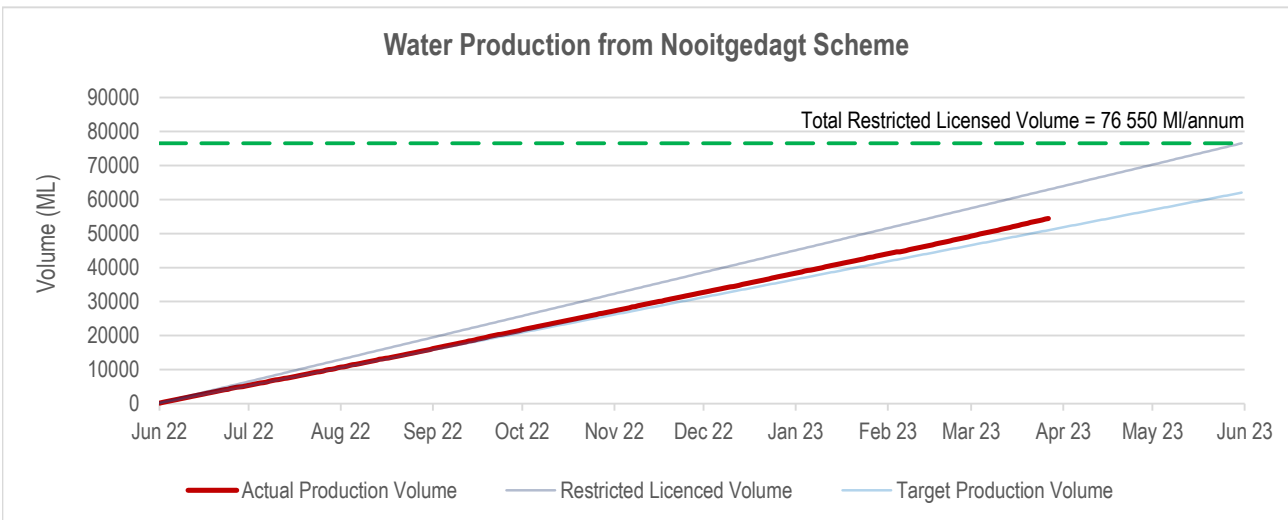
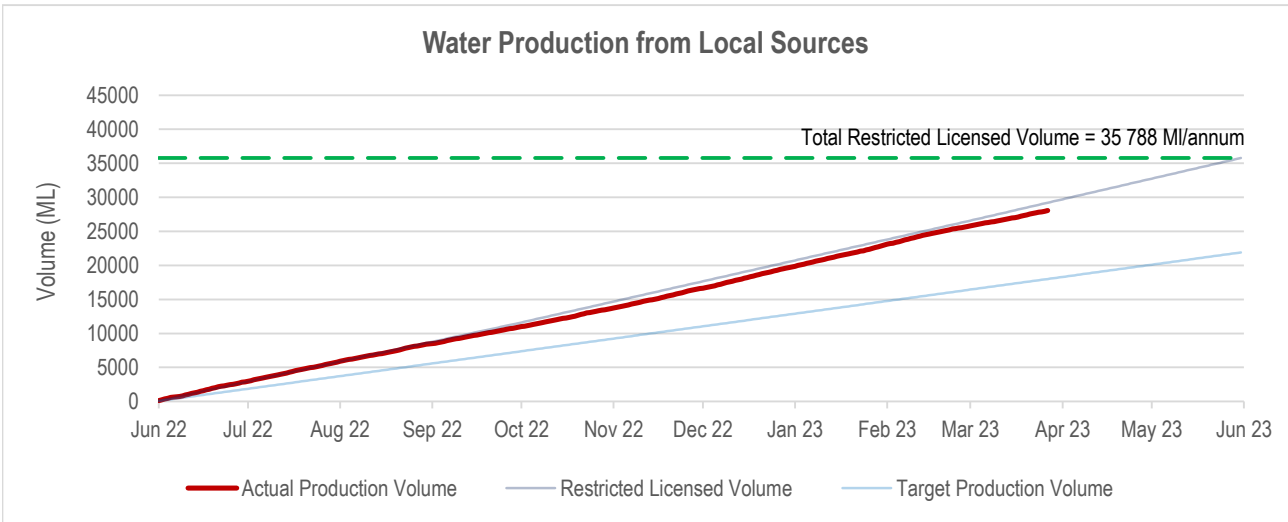


## WATER SUPPLIED BY NMBM

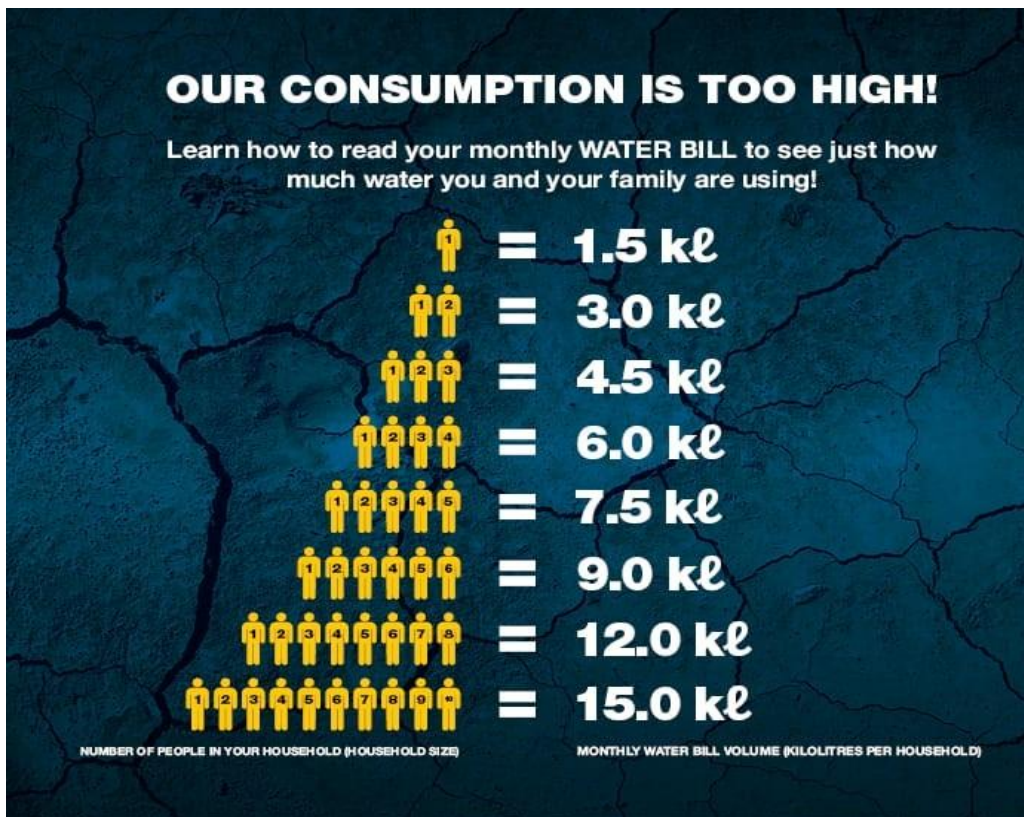


<b>77 MLD</b>	<b>197 MLD</b>	<b>14 MLD</b>
<b>Local Dams</b>	<b>Nooitgedagt Scheme</b>	<b>Groundwater</b>

## LICENSED ABSTRACTION BY NMBM



## WHAT SHOULD I DO?



## ONLY USE 50 LITRES PER PERSON PER DAY

 <b>2ℓ</b> Drinking water	 <b>2ℓ</b> Cooking water	 <b>2ℓ</b> Washing hands	 <b>9ℓ</b> 1 toilet flush	 <b>10ℓ</b> 2 minute shower
 <b>9ℓ</b> 1 sink of dishes	 <b>5ℓ</b> Household cleaning	 <b>1ℓ</b> Water for pets	 <b>10ℓ</b> Laundry	