

WATER SUPPLY & USAGE STATISTICS

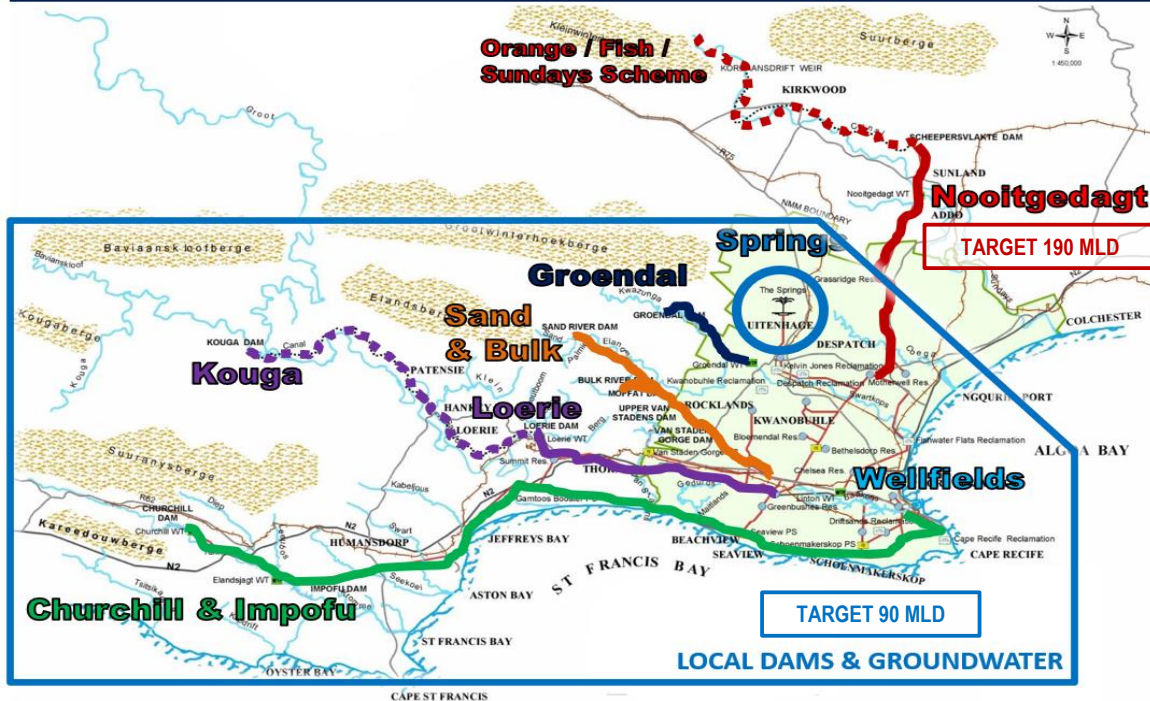
as at day, Tuesday 19 September 2023

TOTAL DAM STORAGE	CHANGE FROM A WEEK AGO	WATER PRODUCED (SEVEN-DAY AVERAGE)
48.93%	-0.03%	292 MLD

NMBM TARGET DEMAND = 280 MILLION LITRES PER DAY (MLD)

12 MLD USED OVER TARGET!

NMBM POTABLE WATER BULK SUPPLY SYSTEM



* Note that the targets consider infrastructure reliability, system interconnectivity, and the recovery of local dams.

43.51% AVAILABLE LOCAL DAM STORAGE!

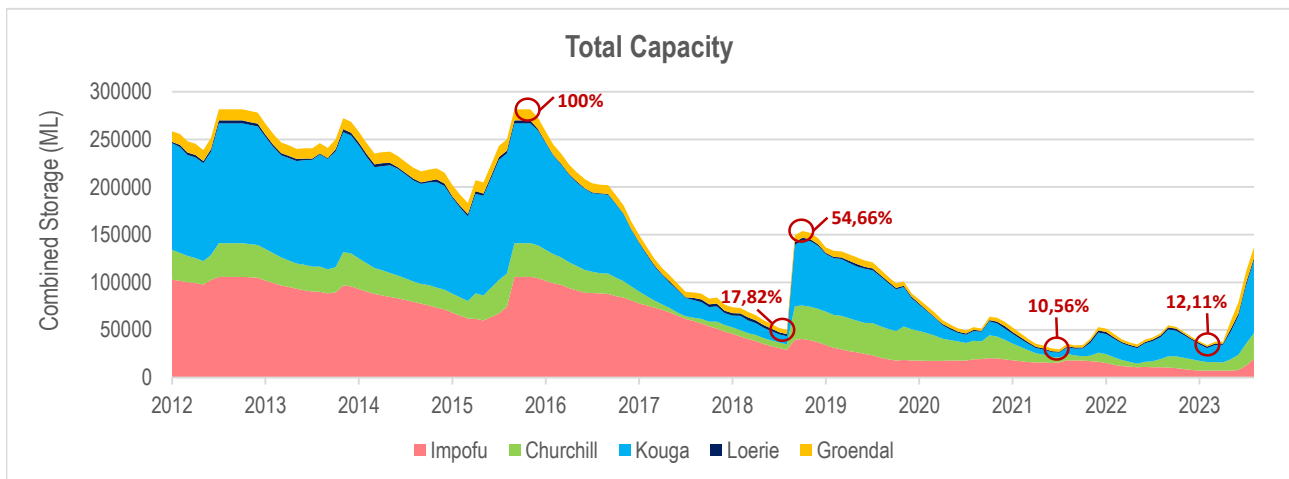
System	Dam	Storage capacity (ML)	Current storage (%)	Dead storage (%)	Available storage (%)	Available water (ML)
Kromme	Churchill	35,240	76.69	7.5	69.19	24,383
	Impofu	105,757	18.97	7.0	11.97	12,659
Kouga	Loerie	3,026	75.31	19.0	56.31	1,704
	Kouga	125,910	60.98	3.3	57.68	72,625
Groendal	Groendal	11,638	100.00	4.2	95.80	11,149
Total		281,571	48.93	5.4	43.51	122,520

WHEN WILL LOCAL DAMS RUN DRY?

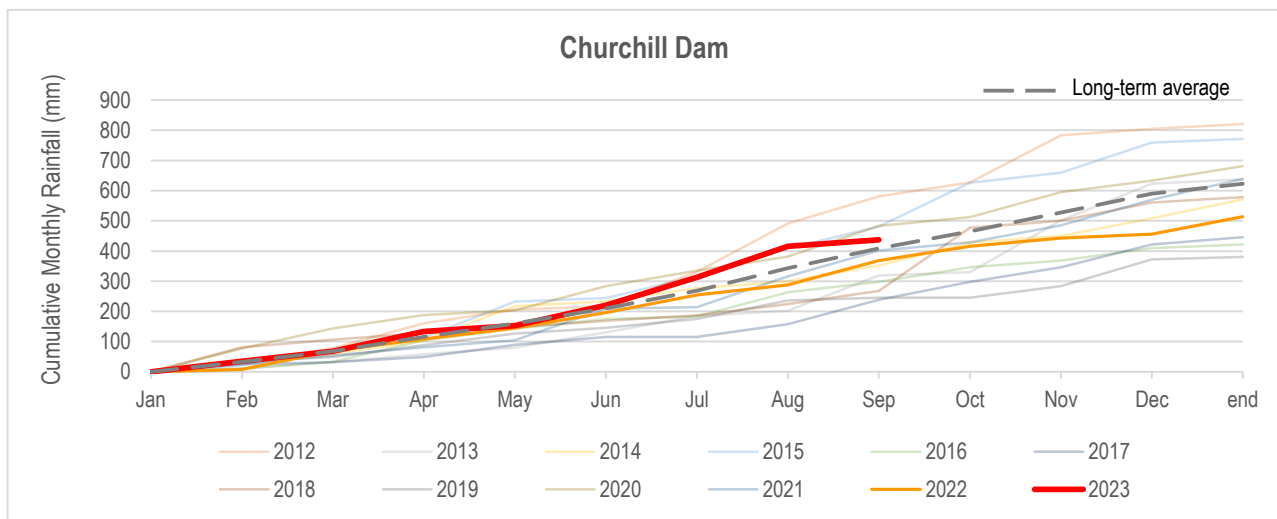
System	Dam	Available water (ML)	RESTRICTED		ACTUAL	
			Usage (MLD)	Water remaining (Days)	Usage (MLD)	Water remaining (Days)
Kromme	Churchill	24,383	31	1195	31	1195
	Impofu	12,659				
Kouga	Loerie	1,704	130	572	130	572
	Kouga	72,625				
Groendal	Groendal	11,149	10	1115	10	1115

* Abstraction from Kouga Dam (130MLD) includes the NMBM's allocation from Loerie Dam (51MLD), Gamtoos Irrigation Board (58MLD), Hankey & Patensie (2MLD), direct irrigators and canal losses.

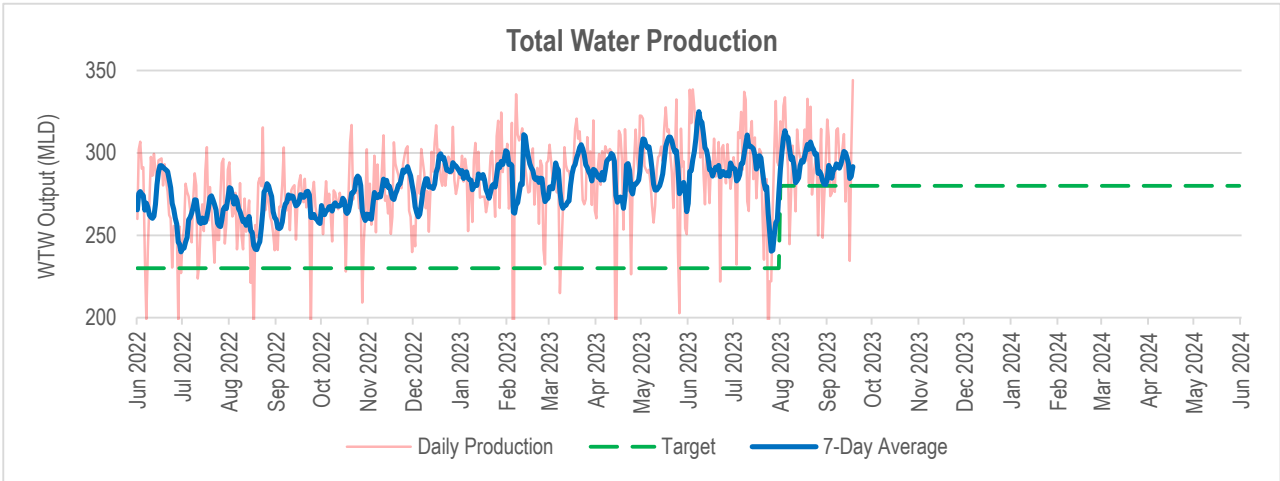
LOCAL DAM STORAGE



RAINFALL IN CATCHMENT AREAS

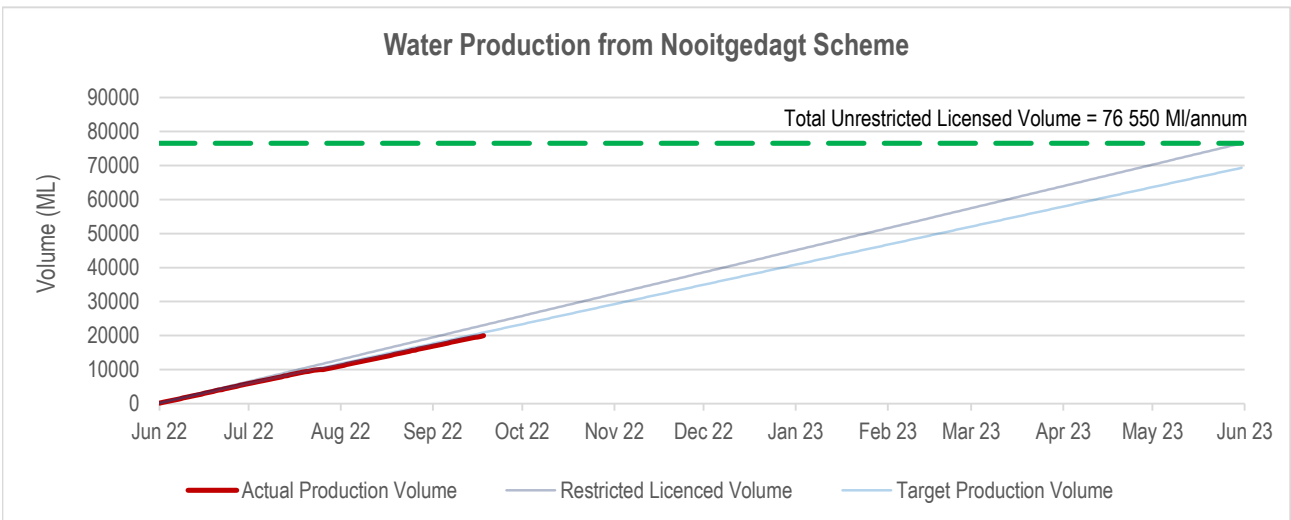
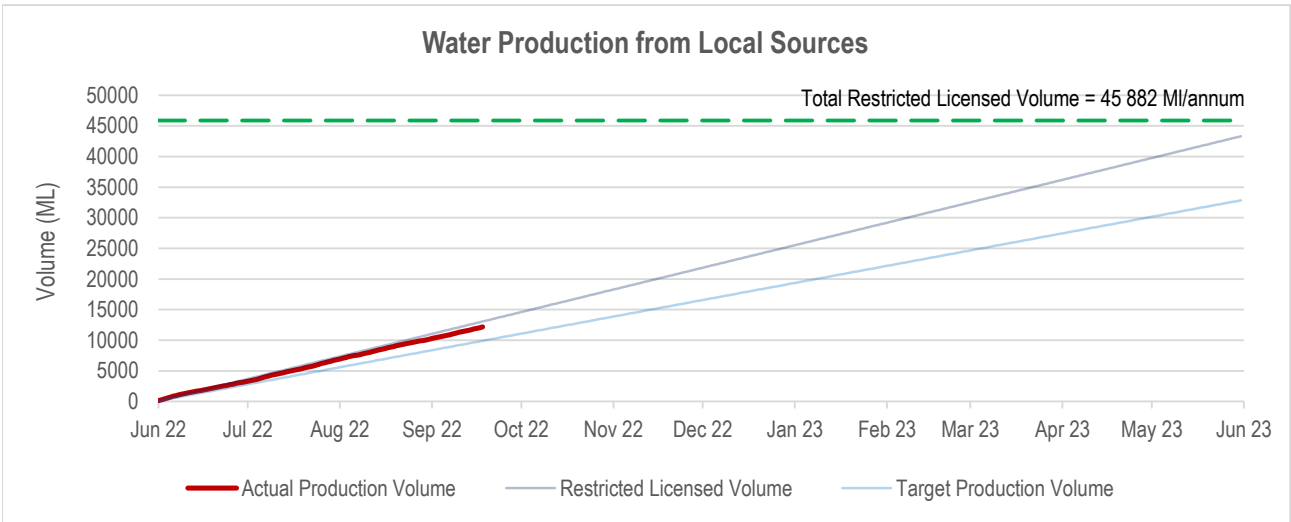


WATER SUPPLIED BY NMBM

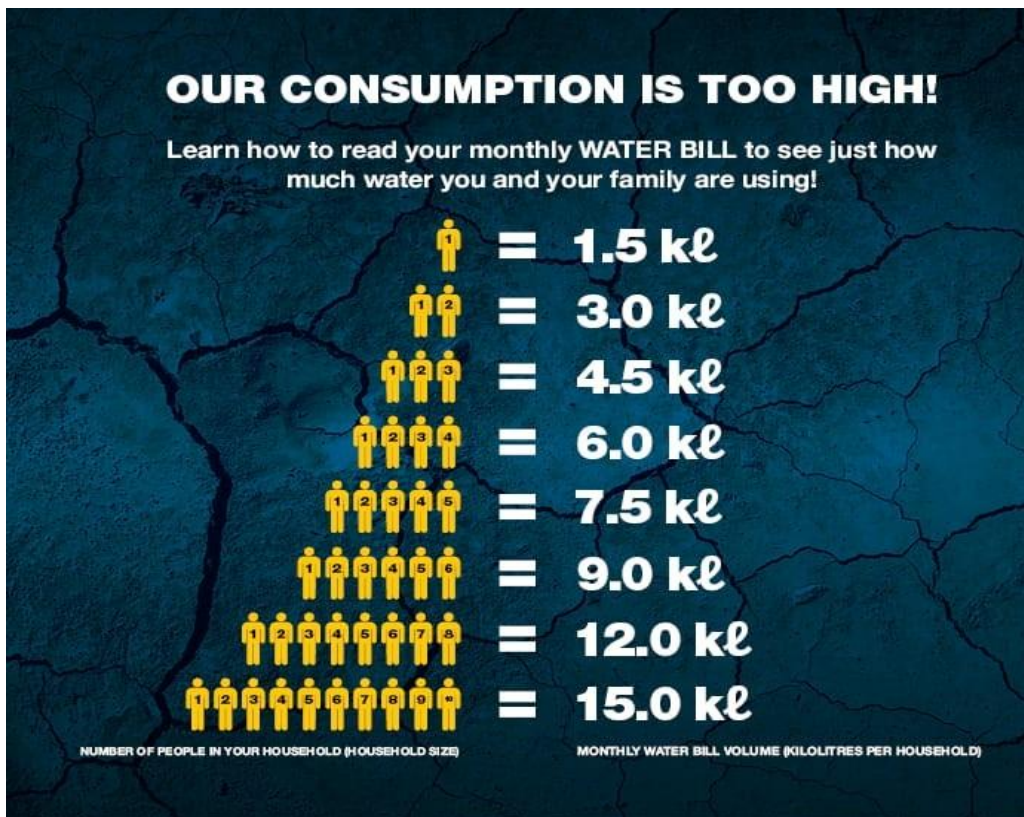


97 MLD	176 MLD	19 MLD
Local Dams	Nooitgedagt Scheme	Groundwater

LICENSED ABSTRACTION BY NMBM



WHAT SHOULD I DO?



ONLY USE 50 LITRES PER PERSON PER DAY

 2ℓ Drinking water	 2ℓ Cooking water	 2ℓ Washing hands	 9ℓ 1 toilet flush	 10ℓ 2 minute shower
 9ℓ 1 sink of dishes	 5ℓ Household cleaning	 1ℓ Water for pets	 10ℓ Laundry	