

NMBM GIS

GEOGRAPHIC INFORMATION SYSTEM

VIEWER USER MANUAL

Updated: 20 Nov.2017



gis.nelsonmandelabay.gov.za/AGSViewerCM/

NMBM Web Map
Nelson Mandela Bay Metro

Help

Drawing and Search Toolbar

- Legend
- Search Property Info
- Find Street
- Identify
- Bookmarks
- Draw
- Measurement
- Print

Map Window

GPS Coordinates

6km
1:288,895 33°40'38.16" S 25°04'23.228" E

esri

08:51 AM
2017/11/20

The image is a screenshot of a web browser displaying the NMBM Web Map. The browser's address bar shows the URL 'gis.nelsonmandelabay.gov.za/AGSViewerCM/'. The page header includes the NMBM logo and the text 'NMBM Web Map Nelson Mandela Bay Metro'. On the left side, there is a 'Drawing and Search Toolbar' with a list of tools: Legend, Search Property Info, Find Street, Identify, Bookmarks, Draw, Measurement, and Print. The main area is a 'Map Window' showing an aerial map with property boundaries outlined in purple and yellow. A scale bar at the bottom left indicates 6km and provides the coordinates '1:288,895 33°40'38.16" S 25°04'23.228" E'. The bottom of the screenshot shows a Windows taskbar with various application icons and a system tray displaying the time '08:51 AM' and date '2017/11/20'. The Esri logo is visible in the bottom right corner of the map area.

1) Navigation Methods used in the Viewer

Use the mouse to zoom in and out in the map.



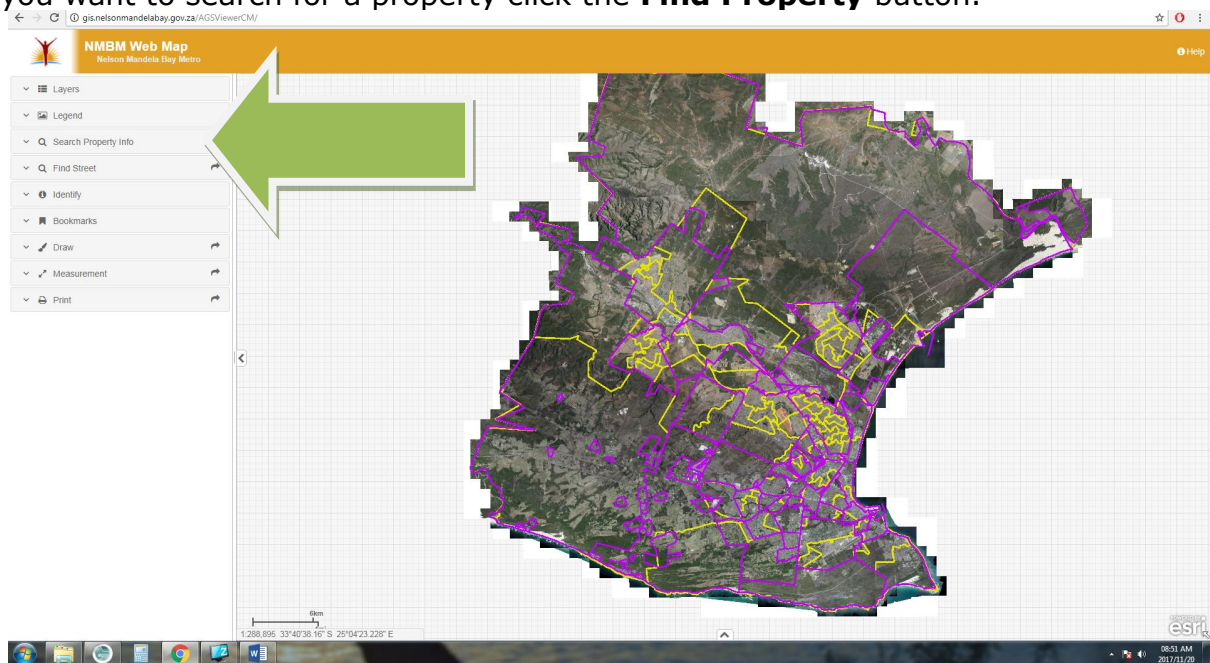
Mouse wheel: Scroll the mouse wheel forward or up to zoom in. Each wheel click will zoom the map by about 50 percent in height and width. The map will zoom into the area the mouse wheel is pointing at.



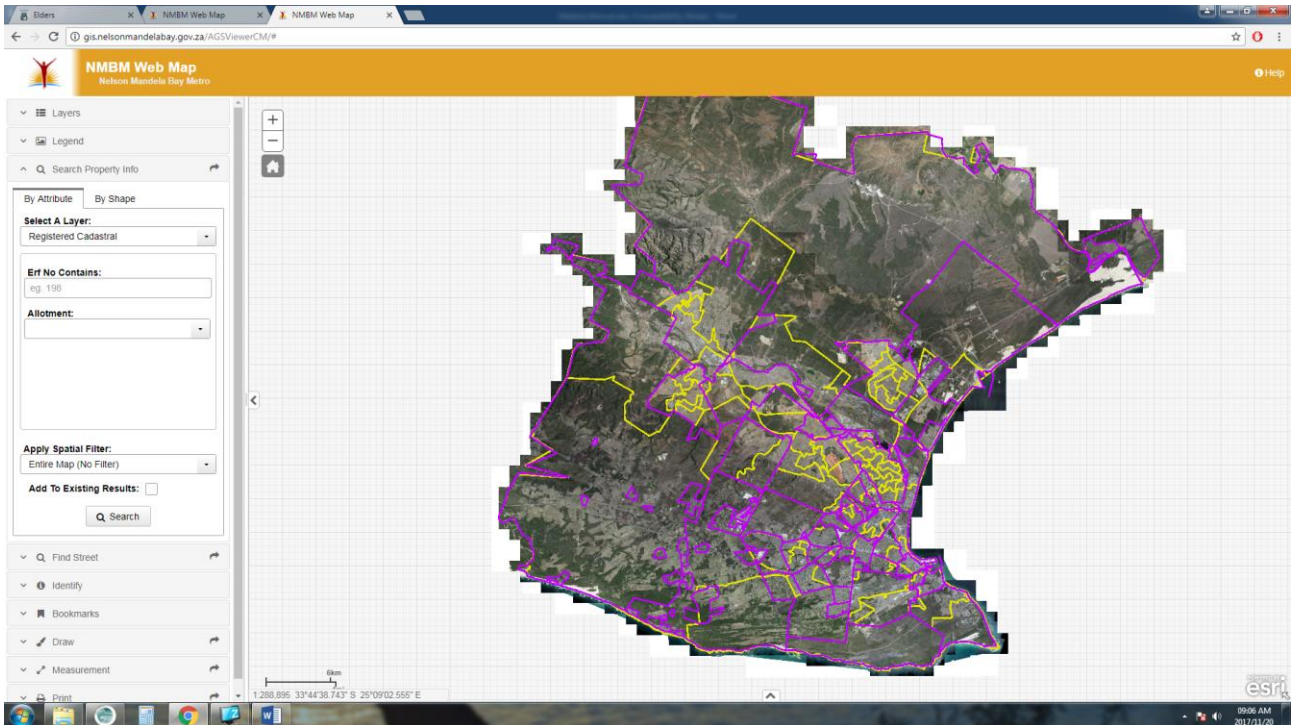
Full extent tool: By clicking on this toolbar the whole map area is displayed – the map cover area displayed when the map is accessed for the first time.

2) Conducting a Search within the Viewer

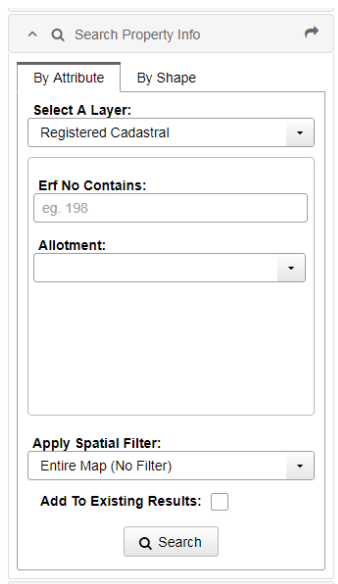
If you want to search for a property click the **Find Property** button.



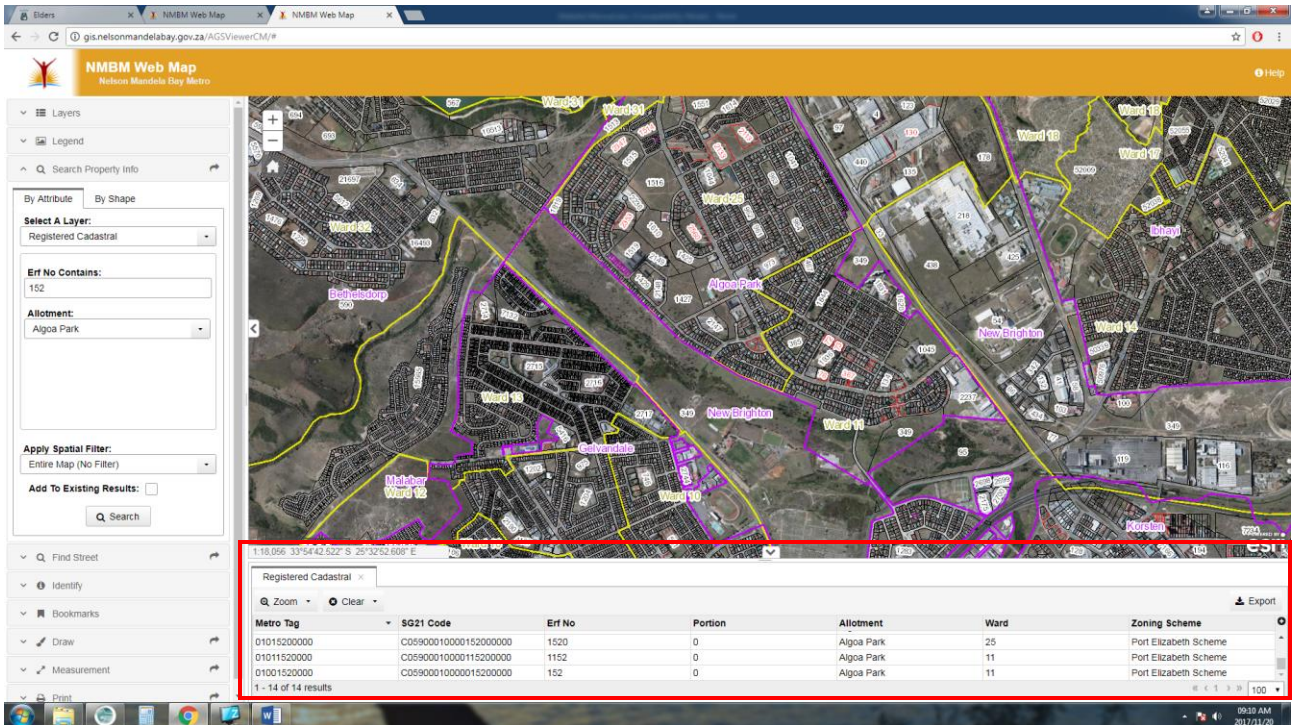
It's the third tool in the list, as indicated by the green arrow.



The above screen will open up.

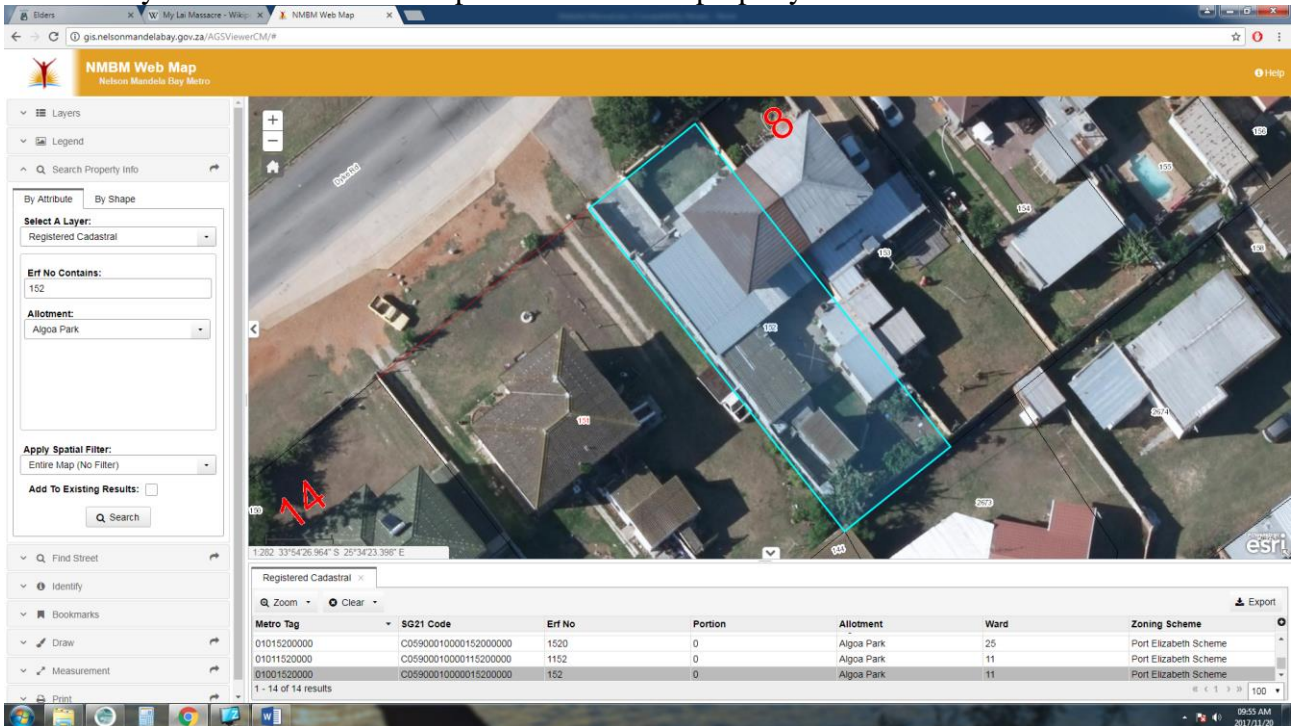


In the window above you first have to select what is the title deed status of the property. In our example we are selecting Registered Cadastral. Once you have selected this a window will open. You can select an **allotment from the dropdown list by clicking on the down arrow**. Select the allotment name from the dropdown list. Then fill in the **erf number** of the property you are looking for. Then click **Execute** as an example look for erf 152 Algoa Park.



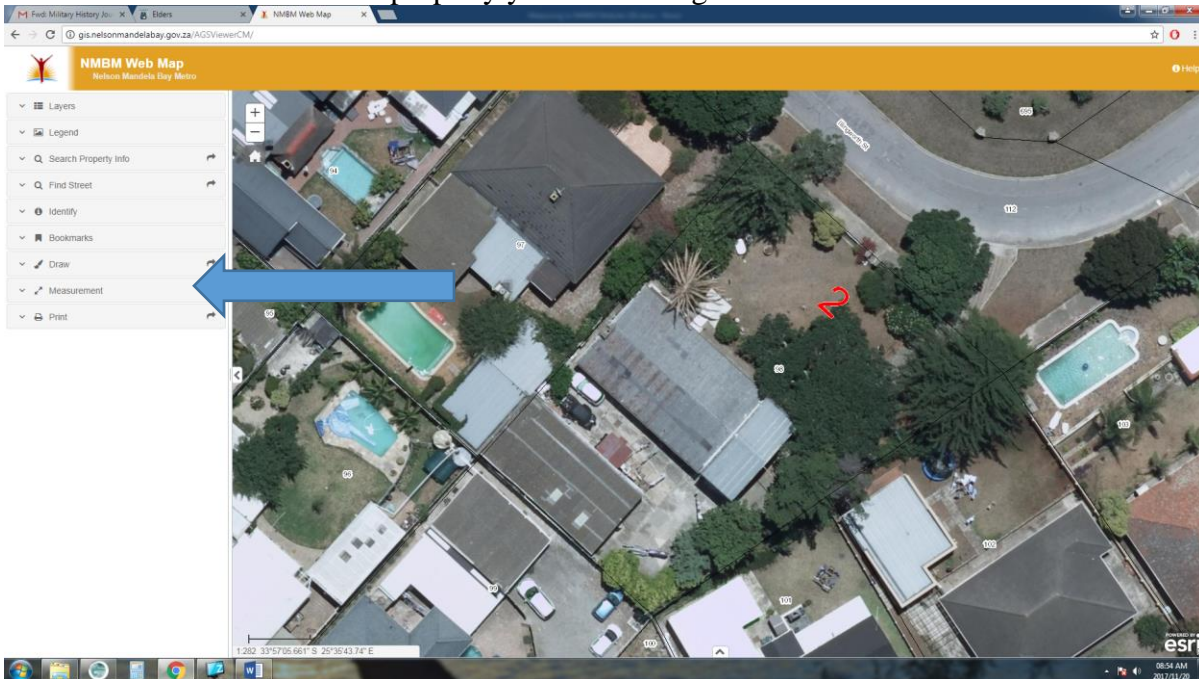
The search will return all properties with 152 in the erf no which are located within the Algoa Park Allotment. The search results will appear as a table in the bottom of the map. (Indicated by red box)

You can then scroll through the results to locate the property you were looking for. You then click on the entry in the table and the map will zoom to the property.



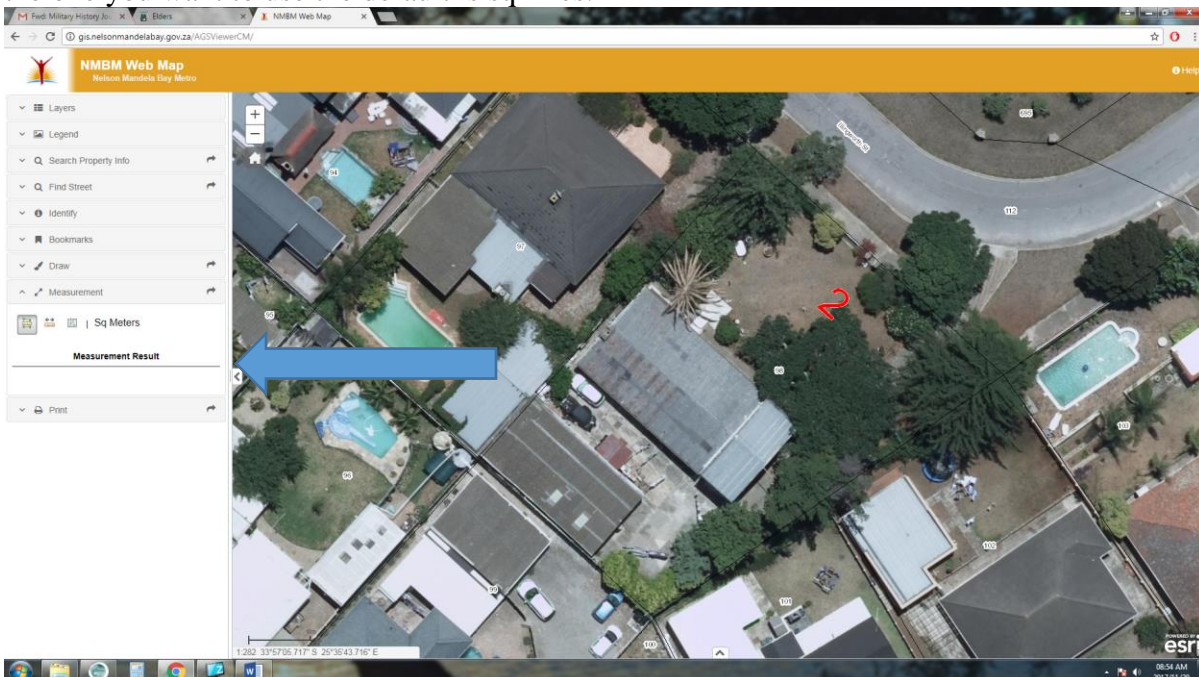
3) Measuring or Drawing on the Maps

Now search or zoom in to the property you are looking for.



You can now click on the measure tool.

The menu will open up as seen below, click on the area tool and change the unit of measurement to the one you want to use the default is sqmiles.



Now start to click with the left mouse button the area you want to measure. The last point in the measurement is double clicked with the left mouse button. The measurements will show up in the measurement tool.

