

SAFETY TIPS | FLOODING

-  #1 **Live in a low-lying area?** Sudden floods might affect them. Monitor the rising water levels and evacuate to a safer place or higher spot.
-  #2 Do not cross through **flooded roads** or **bridges** – use other **routes**.
-  #3 **Avoid crossing** low-lying bridges, streams and rivers.
-  #4 **Never** try to walk, swim or drive in swift-flowing water. Even if water is 15 cm deep, it can sweep you off your feet.
-  #5 Motorists must be **very careful** and avoid **driving** through flooded areas.
-  #6 Drive to and park at **safer areas**.
-  #7 The public must monitor **weather alerts** on radio and television.
-  #8 When threatened **contact** your municipal disaster management centre, police station, call national emergency numbers (**112, 10177, 107**)
-  #9 Do not try to drive over a **low-water bridge** if water is flowing strongly across it and the ground is not visible.
-  #10 **Teach** your **children** about the dangers of floods.
-  #11 Keep your **important documents** in a water-resistant container.
-  #12 Keep your **cell phone** in close proximity to you and have emergency numbers at hand.
-  #13 Be especially vigilant at **night**. It is harder to recognise potentially deadly road **hazards**.
-  #14 Do not **camp** or **park** your car along rivers or washes, especially during heavy rains or thunderstorms.
-  #15 **If you are on foot**, be aware that low-moving water can be dangerous during flood conditions, do not walk into it.
-  #16 Avoid contact with **flood waters**, may be contaminated with raw sewage, oil or other dangerous substances, and may also be charged with electricity.



041 585 1555
EMERGENCY

For more information contact:

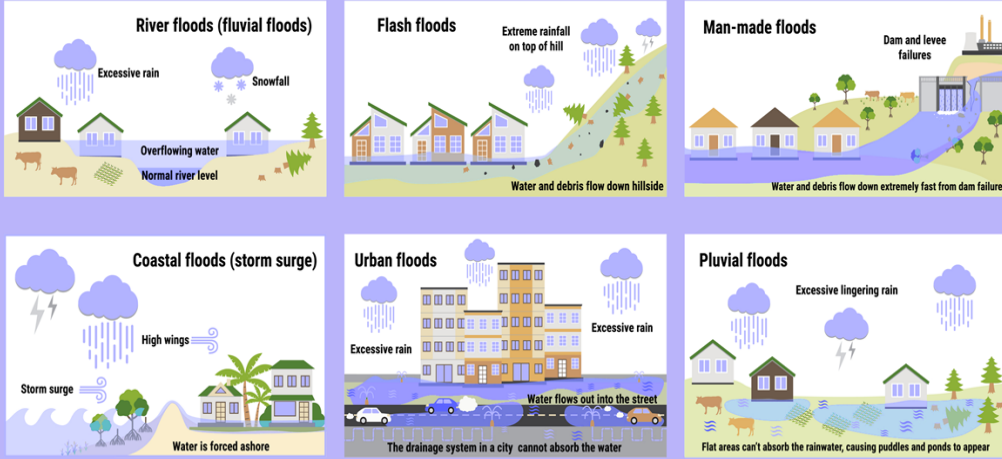
DISASTER MANAGEMENT
041 501 7900

For all EMERGENCIES
041 585 1555



SCAN HERE
FOR MORE INFORMATION
REGARDING DISASTERS

DIFFERENT TYPES OF FLOODS



WARNING:

Always obey and react to early warnings from the South African Weather Services and from your local Disaster Management Centre!

SAWS are the only legislated body that can issue Severe Weather warnings in South Africa



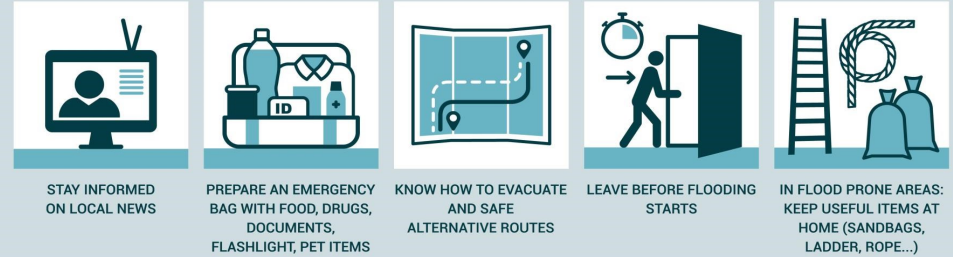
FLOOD SAFETY TIPS

- Move to higher ground.
- Do not attempt to drive through a flooded road.
- 1 foot of water will float vehicles.
- 2 feet of rushing water can carry most vehicles including SUVs.
- Do not drive around a barricade.



FLOOD SAFETY TIPS

BEFORE



DURING THE FLOOD



AFTER



Two key elements which contribute to flooding:

1. Rainfall intensity (the amount of rainfall)
2. Duration (how long the rain lasts)