

URBAN DWELLERS

- ✓ The most important safeguard against drought is to **conserve water**.
- ✓ Households and businesses must implement water-wise measures that reduce their water consumption.
- ✓ Make use of rainwater harvesting techniques (e.g. introduce a small reservoirs or tanks in your garden and channel rainwater from your roof into the tank).

- ✓ Recycle used water to irrigate your garden (e.g. bath and shower water).
- ✓ Use a bucket to water your garden early or late in the afternoon to reduce evaporation.
- ✓ Repair leaking pipes and taps
- ✓ Report water leaks and illegal connections as soon as possible to **0800 205050**

Play your part, be water smart!

Wise Water Use



Save it, or do without it!



For more information contact:

DISASTER MANAGEMENT
041 501 7900

For all EMERGENCIES

041 585 1555



www.nelsonmandelabay.gov.za

DISASTER MANAGEMENT



DROUGHT AWARENESS

SCAN HERE
FOR MORE INFORMATION
REGARDING DISASTERS

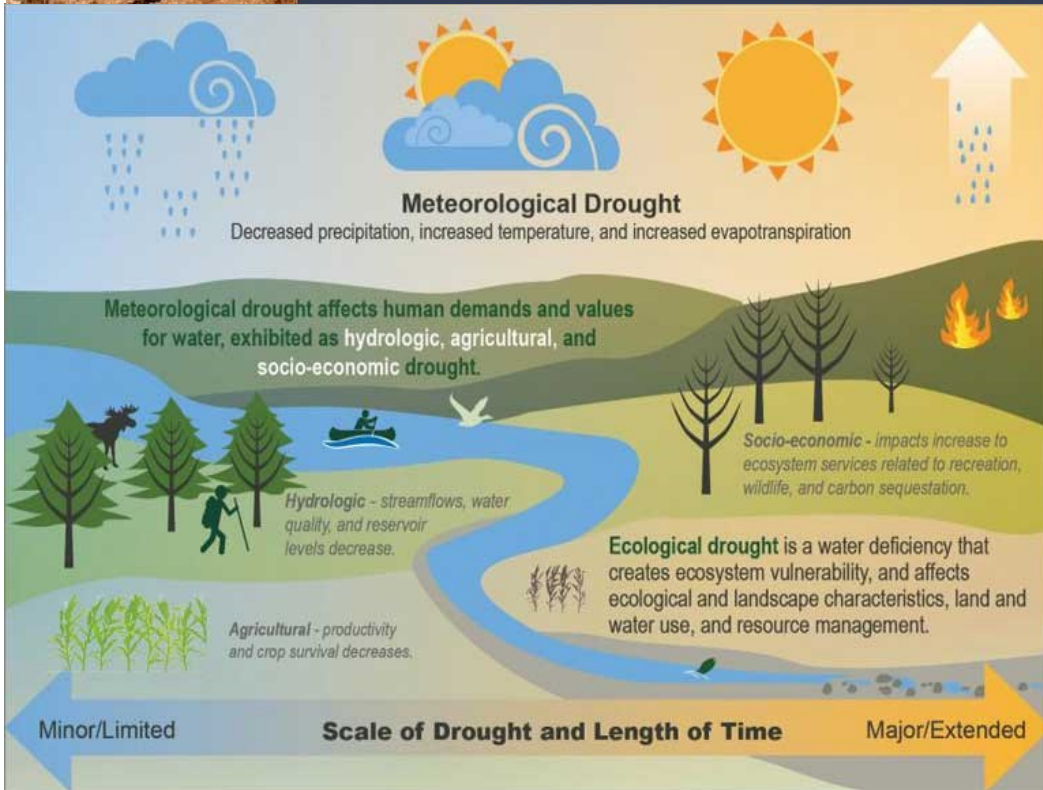


nelson mandela bay
MUNICIPALITY



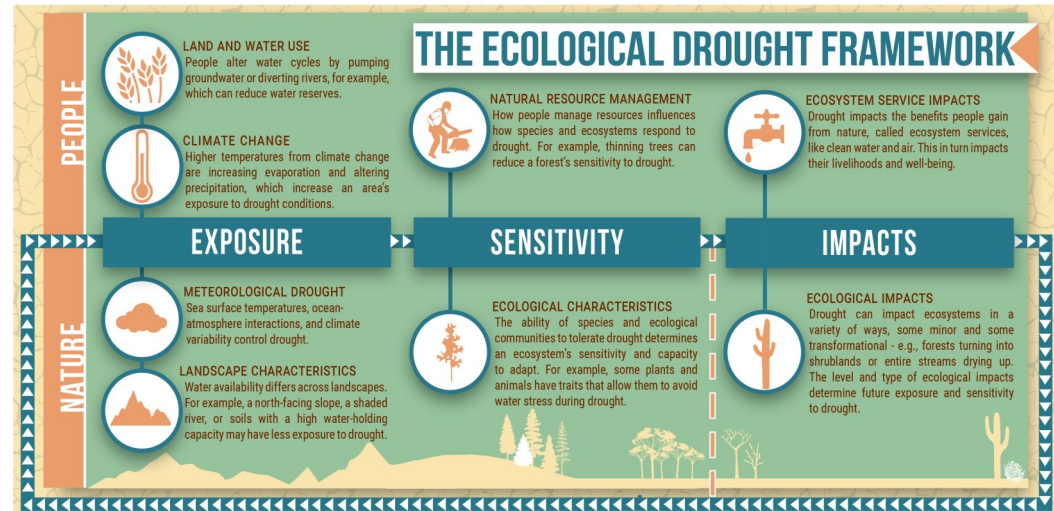
WHAT IS DROUGHT?

Drought is generally defined as a precipitation deficit over a period of time that impacts the community through extensive damage to crops, limited crop yields, and restricted water use.



RETHINKING DROUGHT

Drought affects people and nature alike



How drought can affect health

Drought can have many harsh effects on plants, animals, and the environment. This can contribute to increased risk to human health. Here are only a few examples of what drought can do:



Cause stress, anxiety, and depression. Drought causes economic losses to businesses that rely on water (for example, farms and landscape companies) and job loss for people who work in these areas.



Change the amount and patterns of certain diseases. For example, mosquitoes carrying West Nile virus can move into new areas when stagnant bodies of water create new breeding grounds. Also, dry and dusty soil conditions can increase the risk of Valley Fever, a lung infection caused by a fungus in the soil.



Intensify wildfires and dust storms, thus increasing the number of particulates in the air. This can worsen asthma and other heart and lung diseases.



Intensify heatwaves causing increased risk of injury and death from heat exhaustion or heat stroke.



Stress city- or county-wide water systems that supply water not only to households but also at-risk populations such as people in hospitals and nursing homes.

DROUGHT WARNINGS

Warnings of dry conditions and drought are normally communicated by your local weather office or disaster management centre. Due to the slow onset nature of drought, it is very difficult to give a definite forewarning. We can, however, monitor our water supplies, soil moisture and water usage, which will provide us a good indication of a possible approaching drought. Seasonal forecasts of the SA Weather Service indicating sustained below normal rainfall patterns over the coming months are also a good indication of a possible drought approaching.