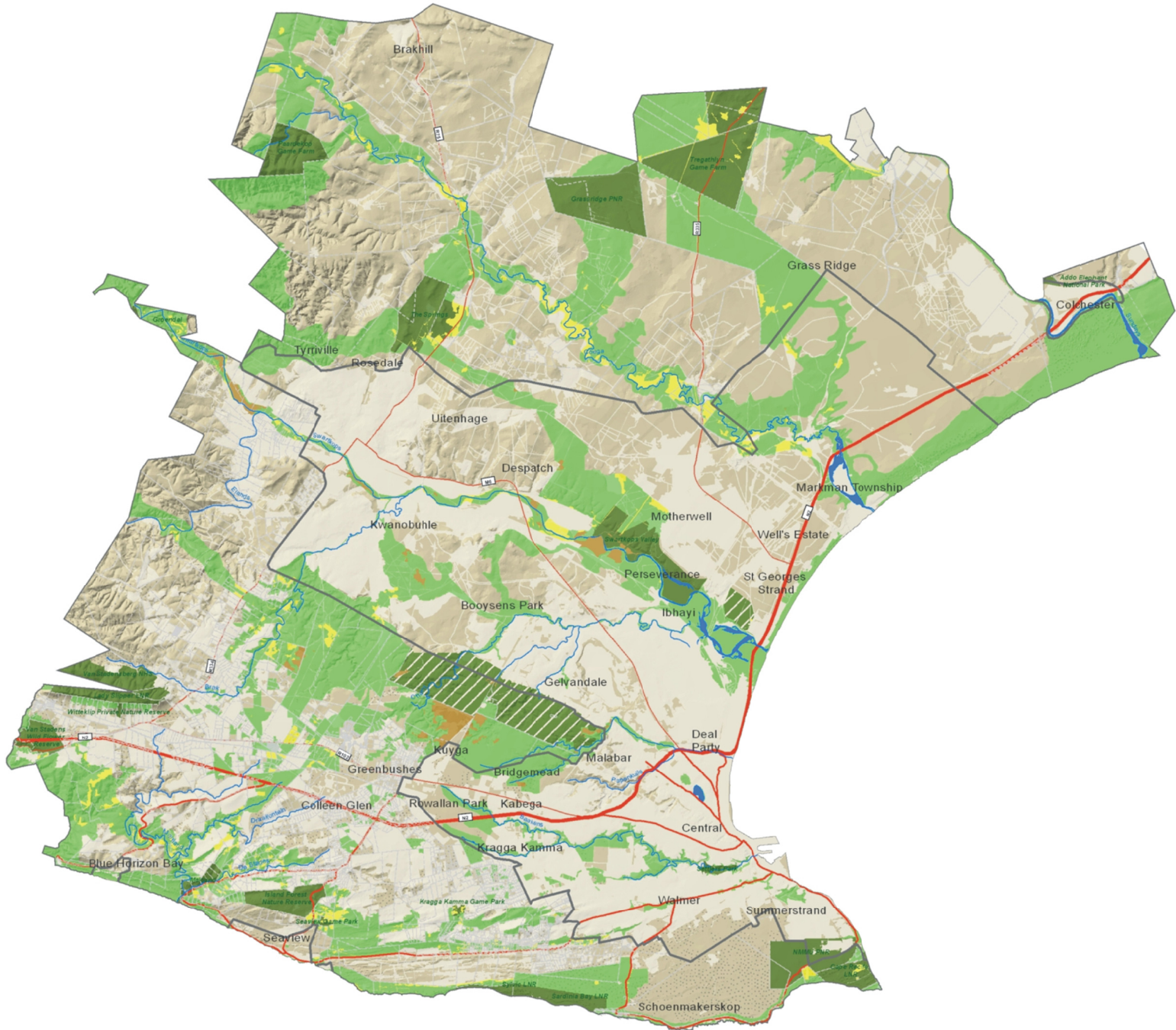


NELSON MANDELA BAY MUNICIPALITY

MAP OF CRITICAL BIODIVERSITY AREAS




nelson mandela bay
 MUNICIPALITY

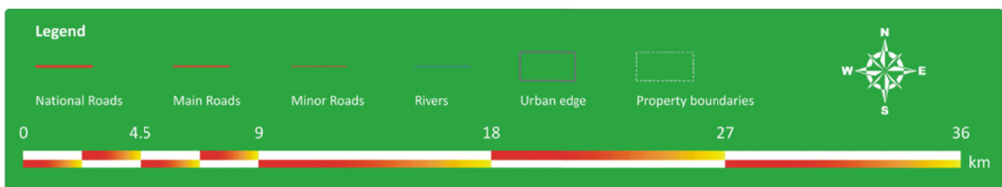

 national biodiversity institute
 S A N B I





srk consulting





Descriptions of Critical Biodiversity Areas and other categories

Category	Code	Description	Land Management Objective
Protected Area 1	PA 1	Protected areas managed by SAN Parks, provincial or local authorities, parastatals (e.g. NMMU), or the private sector. Includes National Parks, Provincial, Local and Private Nature Reserves.	To be maintained as Protected Areas.
Protected Area 2	PA 2	National Parks, Provincial, Local, Private Nature Reserves pending declaration.	To be declared and maintained as Protected Areas.
Critical Biodiversity Areas	CBAs	All <i>Critically Endangered</i> habitats, ecological process areas, ecological corridors, habitats for Species of Special Concern, and some <i>Endangered, Vulnerable</i> or <i>Least Threatened</i> habitats.	Such areas must be managed for biodiversity conservation purposes and incorporated into the protected area system.
Ecological Support Area 1	ESA 1	Agricultural or partly degraded land that plays an important role in ecosystem functioning and / or provides connectivity between natural areas.	Such areas must be maintained for extensive agricultural or similar low intensity purposes and managed to promote ecological connectivity.
Ecological Support Area 2	ESA 2	Areas severely disturbed or transformed by human activities (e.g. mining), requiring restoration or rehabilitation.	Such areas must be restored or rehabilitated to support ecological connectivity. Such areas must not be developed or utilised for medium to high intensity purposes (e.g. crop production, residential, industry etc.).
Other Natural Areas	ONA	Natural areas that are not required to meet biodiversity targets.	As per the Municipal SDF or local SDFs.
Areas where no natural habitat remains	DEV	Areas severely disturbed or transformed by human activities with no natural habitat remaining, including airfields, cultivated lands, forestry plantations, industry, mines and quarries, severe overgrazing, and urban and rural development.	As per the Municipal SDF or local SDFs.