

# **A Demographic profile of Ward 59 within the Nelson Mandela Bay Area**

**By: M Smit**

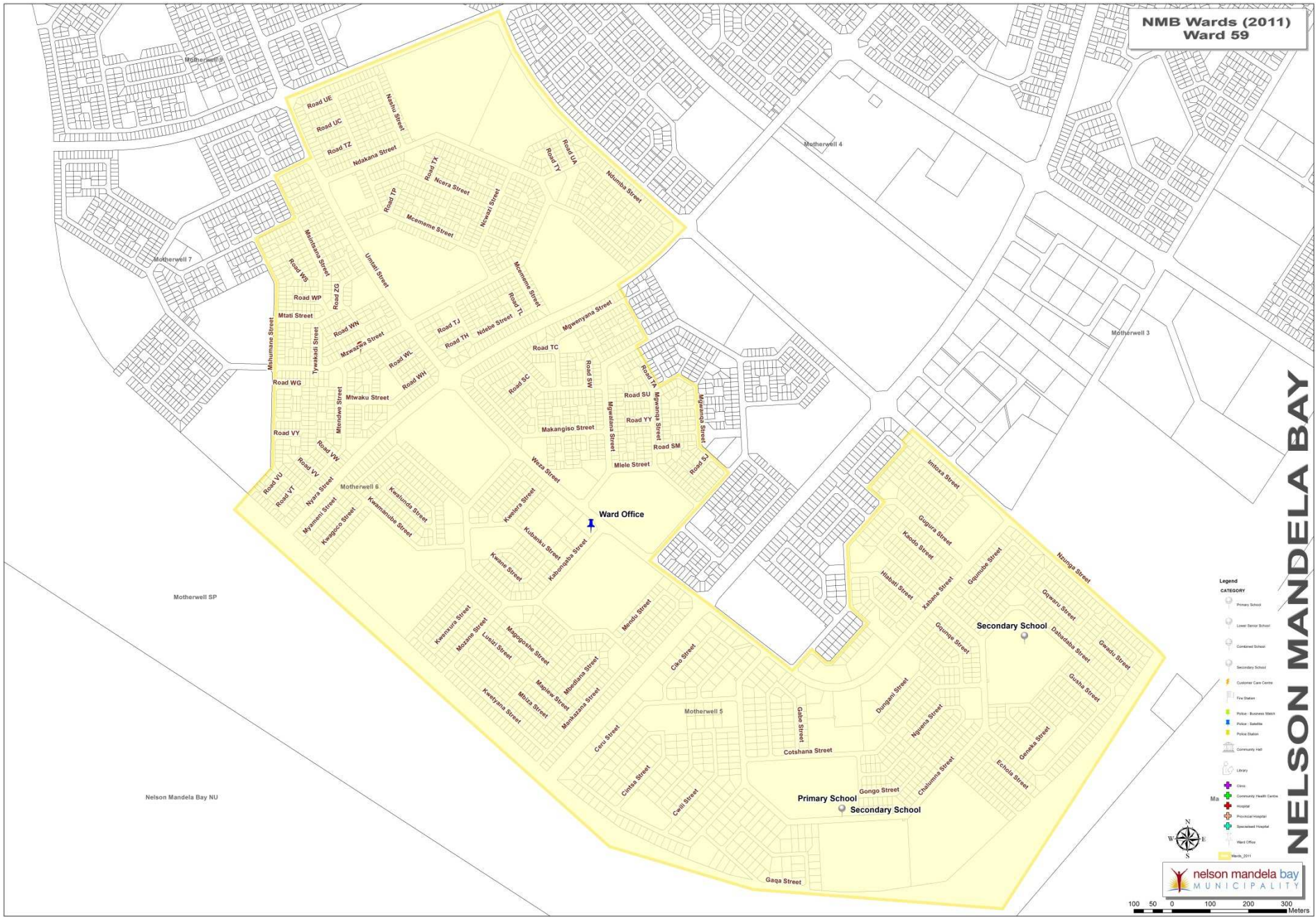
**Corporate GIS**

**04 September 2013**

**Abstract:**

The information and tables that follow are based upon the Census 2011 information as obtained from Statistics SA (StatsSA).

This information can be used and quoted as the official information for the ward number listed whilst giving credit to StatsSA and the writer. Key results for the ward, in addition to the tables extracted are obtained within the report. The only additions to the tables extracted from StatsSA are the totals rows and columns with percentages. The format was inspired by City of Cape Town Ward reports generated by the Strategic Development Information and GIS Department.



NELSON MANDELA BAY

## **Ward 59: Description**

Ward 59 has a geographical area of 2.70km<sup>2</sup> and the Census 2011 registered this ward as having a total population of 16 819. This ward has a higher female population than male with 47% males and 53% females. A total of 99% are Black African and the main language used in the households is isiXhosa spoken by 93% of the population.

This ward has the following community services:

- 2x Primary Schools
- 2x Secondary School
- 1x Ward Office

## **Key Results for Ward 59:**

- The population is predominantly Black African.
- The population consist largely of females
- 50% of the population are aged between 25 -64
- 50% of the population 20 years of age or older have completed Grade 12 or higher.
- 39% of the working population (15 – 64) is employed.
- 26% are unemployed or discouraged work-seeker.
- 46% of households have a monthly income of R3183 or less.
- 100% of the Households (4385) are located within the urban area.
- 99% Live in formal dwellings
- The average household size consists of 3.84 people.
- 99% of households have access to piped (tap) water inside their dwelling.
- 99.52% of households have access to a flush toilet connected to the public sewer system.
- 92% of households have their refuse removed at least once a week.
- 98% of households have access to electricity for cooking in their dwelling.
- 99% of households have access to electricity for lighting in their dwelling.
- 29% of households have access to electricity for heating in their dwelling.

Statistics South Africa (StatsSA) defined a household as a group of people who live together, and provide jointly with food and other essentials for living or alternatively, a single person who lives alone.

Please Note: When Statistics South Africa calculated the true population, there were omissions and duplicate counts encountered during the enumeration process which needed to be rectified. This resulted in small variations in the totals for populations and households within the tables located in this report. These variations are not significant however, they will account for the varying totals.

Ward 59	Black African		Coloured		Indian or Asian		White		Other		Grand Total	
Population Group by Age groups	Total	%	Total	%	Total	%	Total	%	Total	%	Total	%
0 - 4	1495	8.96%	6	8.96%	3	37.50%	2	14.29%	7	16.28%	1513	9.00%
5 - 14	2950	17.68%	6	8.96%	1	12.50%	2	14.29%	2	4.65%	2961	17.61%
15 - 24	3387	20.30%	15	22.39%	0	0.00%	0	0.00%	7	16.28%	3409	20.27%
25 - 64	8288	49.67%	38	56.72%	4	50.00%	9	64.29%	27	62.79%	8366	49.74%
65 - 120	567	3.40%	2	2.99%	0	0.00%	1	7.14%	0	0.00%	570	3.39%
<b>Total</b>	<b>16687</b>	<b>100.00%</b>	<b>67</b>	<b>100.00%</b>	<b>8</b>	<b>100.00%</b>	<b>14</b>	<b>100.00%</b>	<b>43</b>	<b>100.00%</b>	<b>16819</b>	<b>100.00%</b>

Ward 59	Male		Female		Grand Total	
Population Group by Gender	Total	%	Total	%	Total	%
Black African	7835	99.08%	8853	99.33%	16688	99.21%
Coloured	31	0.39%	35	0.39%	66	0.39%
Indian or Asian	7	0.09%	2	0.02%	9	0.05%
White	8	0.10%	7	0.08%	15	0.09%
Other	27	0.34%	16	0.18%	43	0.26%
<b>Total</b>	<b>7908</b>	<b>100.00%</b>	<b>8913</b>	<b>100.00%</b>	<b>16821</b>	<b>100.00%</b>

Ward 59 Adult Education (Ages 20+)	Black African		Coloured		Indian or Asian		White		Other		Total	
	Total	%	Total	%	Total	%	Total	%	Total	%	Total	%
No schooling	143	1.4%	0	0.0%	0	0.0%	0	0.0%	4	12.5%	147	1.4%
Some Primary School	377	3.6%	6	12.2%	0	0.0%	2	22.2%	1	3.1%	386	3.6%
Completed Primary School	202	1.9%	3	6.1%	0	0.0%	1	11.1%	0	0.0%	206	1.9%
Some Secondary School	3648	34.6%	24	49.0%	1	25.0%	2	22.2%	16	50.0%	3691	34.7%
Completed Grade 12	5253	49.8%	10	20.4%	3	75.0%	2	22.2%	10	31.3%	5278	49.6%
Tertiary Education	895	8.5%	6	12.2%	0	0.0%	2	22.2%	1	3.1%	904	8.5%
Other	21	0.2%	0	0.0%	0	0.0%	0	0.0%	0	0.0%	21	0.2%
Unspecified	0	0.0%	0	0.0%	0	0.0%	0	0.0%	0	0.0%	0	0.0%
<b>Total</b>	<b>10539</b>	<b>100.0%</b>	<b>49</b>	<b>100.0%</b>	<b>4</b>	<b>100.0%</b>	<b>9</b>	<b>100.0%</b>	<b>32</b>	<b>100.0%</b>	<b>10633</b>	<b>100.0%</b>

Ward 59 Official Employment Status (Ages 15 - 65)	Male		Female		Total	
	Total	%	Total	%	Total	%
Employed	2291	41.84%	2286	35.83%	4577	38.60%
Unemployed	1181	21.57%	1467	22.99%	2648	22.33%
Discouraged work-seeker	155	2.83%	243	3.81%	398	3.36%
Other not economically active	1814	33.13%	2338	36.65%	4152	35.02%
Age less than 15 years	0	0.00%	0	0.00%	0	0.00%
Not applicable	35	0.64%	46	0.72%	81	0.68%
<b>Total</b>	<b>5476</b>	<b>100.00%</b>	<b>6380</b>	<b>100.00%</b>	<b>11856</b>	<b>100.00%</b>

Ward 59 Official Employment Status (Ages 15-65)	Black African		Coloured		Indian or Asian		White		Other		Total	
	Total	%	Total	%	Total	%	Total	%	Total	%	Total	%
Employed	4513	38.40%	25	46.30%	4	100.00%	5	55.56%	29	87.88%	4576	38.61%
Unemployed	2630	22.38%	17	31.48%	0	0.00%	0	0.00%	1	3.03%	2648	22.34%
Discouraged work-seeker	395	3.36%	0	0.00%	0	0.00%	1	11.11%	1	3.03%	397	3.35%
Other not economically active	4136	35.19%	11	20.37%	0	0.00%	2	22.22%	2	6.06%	4151	35.02%
Age less than 15 years	0	0.00%	0	0.00%	0	0.00%	0	0.00%	0	0.00%	0	0.00%
Not applicable	79	0.67%	1	1.85%	0	0.00%	1	11.11%	0	0.00%	81	0.68%
<b>Total</b>	<b>11753</b>	<b>100.00%</b>	<b>54</b>	<b>100.00%</b>	<b>4</b>	<b>100.00%</b>	<b>9</b>	<b>100.00%</b>	<b>33</b>	<b>100.00%</b>	<b>11853</b>	<b>100.00%</b>

Ward 59 Type of Dwelling	Black African		Coloured		Indian or Asian		White		Other		Total	
	Total	%	Total	%	Total	%	Total	%	Total	%	Total	%
Urban area	4342	100.00%	18	100.00%	2	100.00%	7	100.00%	16	100.00%	4385	100.00%
Tribal or Traditional area	0	0.00%	0	0.00%	0	0.00%	0	0.00%	0	0.00%	0	0.00%
Farm	0	0.00%	0	0.00%	0	0.00%	0	0.00%	0	0.00%	0	0.00%
<b>Total</b>	<b>4342</b>	<b>100.00%</b>	<b>18</b>	<b>100.00%</b>	<b>2</b>	<b>100.00%</b>	<b>7</b>	<b>100.00%</b>	<b>16</b>	<b>100.00%</b>	<b>4385</b>	<b>100.00%</b>

Ward 59 Geographical Type & Households	Formal Households		Formal Households in Backyard		Informal Households		Informal Households in Backyard		Other		Total	
	Total	%	Total	%	Total	%	Total	%	Total	%	Total	%
Urban area	4315	100.00%	38	100.00%	21	100.00%	5	100.00%	6	100.00%	4385	100.00%
Tribal or Traditional area	0	0.00%	0	0.00%	0	0.00%	0	0.00%	0	0.00%	0	0.00%
Farm	0	0.00%	0	0.00%	0	0.00%	0	0.00%	0	0.00%	0	0.00%
<b>Total</b>	<b>4315</b>	<b>100.00%</b>	<b>38</b>	<b>100.00%</b>	<b>21</b>	<b>100.00%</b>	<b>5</b>	<b>100.00%</b>	<b>6</b>	<b>100.00%</b>	<b>4385</b>	<b>100.00%</b>

Ward 59 Type of Dwelling	Black African		Coloured		Indian or Asian		White		Other		Total	
	Num	%	Num	%	Num	%	Num	%	Num	%	Num	%
Formal Dwelling	4274	98.43%	18	100.00%	2	100.00%	7	100.00%	14	93.33%	4315	98.43%
Informal Dwelling	17	0.39%	0	0.00%	0	0.00%	0	0.00%	0	0.00%	17	0.39%
Formal Backyard Dwelling	37	0.85%	0	0.00%	0	0.00%	0	0.00%	1	6.67%	38	0.87%
Informal Backyard Dwelling	5	0.12%	0	0.00%	0	0.00%	0	0.00%	0	0.00%	5	0.11%
Other	9	0.21%	0	0.00%	0	0.00%	0	0.00%	0	0.00%	9	0.21%
<b>Total</b>	<b>4342</b>	<b>100.00%</b>	<b>18</b>	<b>100.00%</b>	<b>2</b>	<b>100.00%</b>	<b>7</b>	<b>100.00%</b>	<b>15</b>	<b>100.00%</b>	<b>4384</b>	<b>100.00%</b>

Ward 59 Access to Piped Water	Black African		Coloured		Indian or Asian		White		Other		Total	
	Num	%	Num	%	Num	%	Num	%	Num	%	Num	%
Piped (tap) water inside dwelling	4281	98.60%	18	100.00%	2	100.00%	7	100.00%	12	75.00%	4320	98.52%
Piped (tap) water inside yard	52	1.20%	0	0.00%	0	0.00%	0	0.00%	4	25.00%	56	1.28%
Piped (tap) water < 200m away	4	0.09%	0	0.00%	0	0.00%	0	0.00%	0	0.00%	4	0.09%
Piped (tap) water > 200m away	2	0.05%	0	0.00%	0	0.00%	0	0.00%	0	0.00%	2	0.05%
No access to piped (tap) water	3	0.07%	0	0.00%	0	0.00%	0	0.00%	0	0.00%	3	0.07%
<b>Total</b>	<b>4342</b>	<b>100.00%</b>	<b>18</b>	<b>100.00%</b>	<b>2</b>	<b>100.00%</b>	<b>7</b>	<b>100.00%</b>	<b>16</b>	<b>100.00%</b>	<b>4385</b>	<b>100.00%</b>

Ward 59 Energy or Fuel for Cooking	Black African		Coloured		Indian or Asian		White		Other		Total	
	Num	%	Num	%	Num	%	Num	%	Num	%	Num	%
Electricity	4276	98.48%	17	94.44%	2	100.00%	7	100.00%	16	100.00%	4318	98.47%
Gas	32	0.74%	0	0.00%	0	0.00%	0	0.00%	0	0.00%	32	0.73%
Solar	1	0.02%	1	5.56%	0	0.00%	0	0.00%	0	0.00%	2	0.05%
Other	28	0.64%	0	0.00%	0	0.00%	0	0.00%	0	0.00%	28	0.64%
None	5	0.12%	0	0.00%	0	0.00%	0	0.00%	0	0.00%	5	0.11%
<b>Total</b>	<b>4342</b>	<b>100.00%</b>	<b>18</b>	<b>100.00%</b>	<b>2</b>	<b>100.00%</b>	<b>7</b>	<b>100.00%</b>	<b>16</b>	<b>100.00%</b>	<b>4385</b>	<b>100.00%</b>

Ward 59 Energy or Fuel for Lighting	Black African		Coloured		Indian or Asian		White		Other		Total	
	Num	%	Num	%	Num	%	Num	%	Num	%	Num	%
Electricity	4307	99.19%	18	100.00%	2	100.00%	7	100.00%	16	100.00%	4350	99.20%
Gas	5	0.12%	0	0.00%	0	0.00%	0	0.00%	0	0.00%	5	0.11%
Solar	7	0.16%	0	0.00%	0	0.00%	0	0.00%	0	0.00%	7	0.16%
Other	24	0.55%	0	0.00%	0	0.00%	0	0.00%	0	0.00%	24	0.55%
None	0	0.00%	0	0.00%	0	0.00%	0	0.00%	0	0.00%	0	0.00%
Total	4343	100.02%	18	100.00%	2	100.00%	7	100.00%	16	100.00%	4386	100.02%

Ward 59 Energy or Fuel for Heating	Black African		Coloured		Indian or Asian		White		Other		Total	
	Num	%	Num	%	Num	%	Num	%	Num	%	Num	%
Electricity	1280	29.48%	5	27.78%	1	50.00%	3	42.86%	5	31.25%	1293	29.49%
Gas	88	2.03%	0	0.00%	0	0.00%	0	0.00%	0	0.00%	88	2.01%
Solar	2	0.05%	0	0.00%	0	0.00%	0	0.00%	0	0.00%	2	0.05%
Other	2353	54.19%	6	33.33%	1	50.00%	4	57.14%	3	18.75%	2367	53.98%
None	619	14.26%	7	38.89%	0	0.00%	0	0.00%	8	50.00%	634	14.46%
Total	4342	100.00%	18	100.00%	2	100.00%	7	100.00%	16	100.00%	4384	99.98%

Ward 59 Toilet Facilities	Black African		Coloured		Indian or Asian		White		Other		Total	
	Num	%	Num	%	Num	%	Num	%	Num	%	Num	%
None	1	0.02%	0	0.00%	0	0.00%	0	0.00%	2	13.33%	3	0.07%
Flush toilet (connected to sewerage system)	4324	99.56%	18	100.00%	2	100.00%	7	100.00%	13	86.67%	4364	99.52%
Flush toilet (with septic tank)	9	0.21%	0	0.00%	0	0.00%	0	0.00%	0	0.00%	9	0.21%
Chemical toilet	0	0.00%	0	0.00%	0	0.00%	0	0.00%	0	0.00%	0	0.00%
Pit toilet with ventilation (VIP)	0	0.00%	0	0.00%	0	0.00%	0	0.00%	0	0.00%	0	0.00%
Pit toilet without ventilation	0	0.00%	0	0.00%	0	0.00%	0	0.00%	0	0.00%	0	0.00%
Bucket toilet	4	0.09%	0	0.00%	0	0.00%	0	0.00%	0	0.00%	4	0.09%
Other	5	0.12%	0	0.00%	0	0.00%	0	0.00%	0	0.00%	5	0.11%
Total	4343	100.00%	18	100.00%	2	100.00%	7	100.00%	15	100.00%	4385	100.00%



Ward 59 Refuse Disposal	Black African		Coloured		Indian or Asian		White		Other		Total	
	Num	%	Num	%	Num	%	Num	%	Num	%	Num	%
Removed by local authority/private company at least once a week	3993	91.98%	15	83.33%	2	100.00%	7	100.00%	15	93.75%	4032	91.97%
Removed by local authority/private company less often	275	6.33%	3	16.67%	0	0.00%	0	0.00%	0	0.00%	278	6.34%
Communal refuse dump	44	1.01%	0	0.00%	0	0.00%	0	0.00%	0	0.00%	44	1.00%
Own refuse dump or Other	28	0.65%	0	0.00%	0	0.00%	0	0.00%	1	6.25%	29	0.66%
No rubbish disposal	1	0.02%	0	0.00%	0	0.00%	0	0.00%	0	0.00%	1	0.02%
<b>Total</b>	<b>4341</b>	<b>100.00%</b>	<b>18</b>	<b>100.00%</b>	<b>2</b>	<b>100.00%</b>	<b>7</b>	<b>100.00%</b>	<b>16</b>	<b>100.00%</b>	<b>4384</b>	<b>100.00%</b>

Ward 59 - Source of Water		
	Total	%
Regional/local water scheme (operated by municipality or other water services provider)	4350	99.22%
Borehole - Rain water tank	13	0.30%
Dam/pool/stagnant water - River/stream	1	0.02%
Water vendor	0	0.00%
Water tanker	6	0.14%
Other	14	0.32%
Not applicable	0	0.00%
<b>Total</b>	<b>4384</b>	<b>100.00%</b>

	Ward 59 - Main Language	
	Total	%
Afrikaans	154	0.92%
English	482	2.87%
IsiNdebele	47	0.28%
IsiXhosa	15655	93.07%
IsiZulu	50	0.30%
Sepedi	54	0.32%
Sesotho	90	0.54%
Setswana	18	0.11%
Sign language	145	0.86%
SiSwati	0	0.00%
Tshivenda	17	0.10%
Xitsonga	16	0.10%
Other	92	0.55%
Unspecified	0	0.00%
Not applicable	0	0.00%
<b>Total</b>	<b>16820</b>	<b>100.00%</b>

No of People	Ward 59 - Household Size	
	Total	%
1	615	14.03%
2	705	16.08%
3	796	18.16%
4	893	20.37%
5	594	13.55%
6	391	8.92%
7	203	4.63%
8	95	2.17%
9	45	1.03%
10+	47	1.07%
	<b>4384</b>	<b>100.00%</b>