

A Demographic profile of Ward 53 within the Nelson Mandela Bay Area

By: M Smit

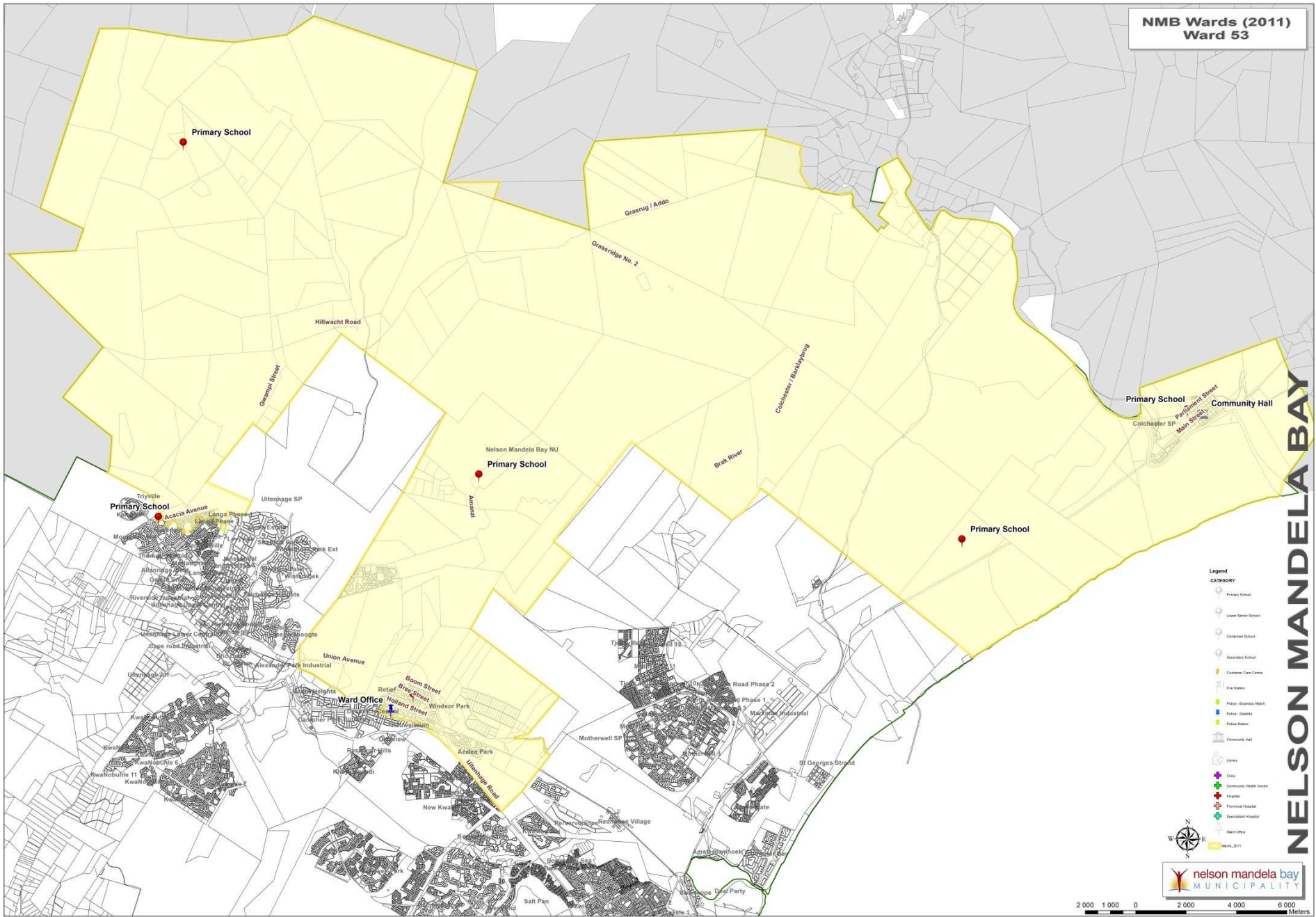
Corporate GIS

04 September 2013

Abstract:

The information and tables that follow are based upon the Census 2011 information as obtained from Statistics SA (StatsSA).

This information can be used and quoted as the official information for the ward number listed whilst giving credit to StatsSA and the writer. Key results for the ward, in addition to the tables extracted are obtained within the report. The only additions to the tables extracted from StatsSA are the totals rows and columns with percentages. The format was inspired by City of Cape Town Ward reports generated by the Strategic Development Information and GIS Department.



NELSON MANDELA BAY

Ward 53: Description

Ward 53 has a geographical area of 713.86km² and the Census 2011 registered this ward as having a total population of 31 752. This ward has a slightly higher female population than male with 49% males and 51% females. A total of 36% are Coloured whilst 35% are Black African. The main language used in the households is Afrikaans spoken by 61% of the population.

This ward has the following community services:

- 1x Community Halls
- 6x Primary Schools
- 1x Ward Office (Located in Ward 48)

Key Results for Ward 53:

- The population is predominantly of Coloured and Black African.
- The population consist only slightly more of females.
- 52% of the population are aged between 25 -64
- 33% of the population 20 years of age or older have completed Grade 12 or higher.
- 39% of the working population (15 – 64) is employed.
- 23% are unemployed or discouraged work-seeker.
- 56% of households have a monthly income of R3183 or less.
- 76% of the Households (8712) are located within the urban area.
- 73% Live in formal dwellings
- The average household size consists of 3.64 people.
- 66% of households have access to piped (tap) water inside their dwelling.
- 64% of households have access to a flush toilet connected to the public sewer system.
- 65% of households have their refuse removed at least once a week.
- 67% of households have access to electricity for cooking in their dwelling.
- 73% of households have access to electricity for lighting in their dwelling.
- 55% of households have access to electricity for heating in their dwelling.

Statistics South Africa (StatsSA) defined a household as a group of people who live together, and provide jointly with food and other essentials for living or alternatively, a single person who lives alone.

Please Note: When Statistics South Africa calculated the true population, there were omissions and duplicate counts encountered during the enumeration process which needed to be rectified. This resulted in small variations in the totals for populations and households within the tables located in this report. These variations are not significant however, they will account for the varying totals.

Ward 53	Black African		Coloured		Indian or Asian		White		Other		Grand Total	
Population Group by Age groups	Total	%	Total	%	Total	%	Total	%	Total	%	Total	%
0 - 4	1282	11.57%	1273	11.21%	11	15.28%	510	5.62%	9	5.29%	3085	9.72%
5 - 14	1874	16.91%	2245	19.78%	12	16.67%	1053	11.60%	16	9.41%	5200	16.38%
15 - 24	1780	16.06%	2071	18.24%	9	12.50%	1183	13.03%	28	16.47%	5071	15.97%
25 - 64	5743	51.83%	5397	47.54%	37	51.39%	5338	58.81%	107	62.94%	16622	52.35%
65 - 120	402	3.63%	366	3.22%	3	4.17%	993	10.94%	10	5.88%	1774	5.59%
Total	11081	100.00%	11352	100.00%	72	100.00%	9077	100.00%	170	100.00%	31752	100.00%

Ward 53	Male		Female		Grand Total	
Population Group by Gender	Total	%	Total	%	Total	%
Black African	5379	34.69%	5702	35.10%	11081	34.90%
Coloured	5516	35.57%	5837	35.93%	11353	35.75%
Indian or Asian	32	0.21%	40	0.25%	72	0.23%
White	4451	28.70%	4626	28.47%	9077	28.59%
Other	129	0.83%	41	0.25%	170	0.54%
Total	15507	100.00%	16246	100.00%	31753	100.00%

Ward 53 Adult Education (Ages 20+)	Black African		Coloured		Indian or Asian		White		Other		Total	
	Total	%	Total	%	Total	%	Total	%	Total	%	Total	%
No schooling	432	6.1%	379	5.6%	0	0.0%	39	0.6%	11	8.6%	861	4.1%
Some Primary School	1057	15.0%	487	7.2%	1	2.3%	51	0.7%	5	3.9%	1601	7.7%
Completed Primary School	328	4.7%	231	3.4%	1	2.3%	52	0.8%	1	0.8%	613	2.9%
Some Secondary School	3507	49.9%	3894	57.2%	19	44.2%	2442	35.6%	64	50.0%	9926	47.6%
Completed Grade 12	1419	20.2%	1760	25.9%	21	48.8%	3687	53.8%	38	29.7%	6925	33.2%
Tertiary Education	278	4.0%	51	0.7%	1	2.3%	542	7.9%	6	4.7%	878	4.2%
Other	5	0.1%	6	0.1%	0	0.0%	41	0.6%	3	2.3%	55	0.3%
Unspecified	0	0.0%	0	0.0%	0	0.0%	0	0.0%	0	0.0%	0	0.0%
Total	7026	100.0%	6808	100.0%	43	100.0%	6854	100.0%	128	100.0%	20859	100.0%

Ward 53 Official Employment Status (Ages 15 - 65)	Male		Female		Total	
	Total	%	Total	%	Total	%
Employed	5066	47.44%	3509	31.31%	8576	39.18%
Unemployed	1856	17.38%	2311	20.62%	4167	19.04%
Discouraged work-seeker	366	3.43%	439	3.92%	805	3.68%
Other not economically active	3304	30.94%	4840	43.19%	8144	37.21%
Age less than 15 years	0	0.00%	0	0.00%	0	0.00%
Not applicable	87	0.81%	107	0.95%	194	0.89%
Total	10679	100.00%	11206	100.00%	21886	100.00%

Ward 53 Official Employment Status (Ages 15-65)	Black African		Coloured		Indian or Asian		White		Other		Total	
	Total	%	Total	%	Total	%	Total	%	Total	%	Total	%
Employed	2223	29.32%	2461	32.79%	12	26.67%	3789	57.29%	91	65.94%	8576	39.18%
Unemployed	2396	31.60%	1422	18.94%	6	13.33%	334	5.05%	9	6.52%	4167	19.04%
Discouraged work-seeker	463	6.11%	238	3.17%	2	4.44%	100	1.51%	2	1.45%	805	3.68%
Other not economically active	2442	32.20%	3347	44.59%	25	55.56%	2298	34.74%	33	23.91%	8145	37.22%
Age less than 15 years	0	0.00%	0	0.00%	0	0.00%	0	0.00%	0	0.00%	0	0.00%
Not applicable	59	0.78%	38	0.51%	0	0.00%	93	1.41%	3	2.17%	193	0.88%
Total	7583	100.00%	7506	100.00%	45	100.00%	6614	100.00%	138	100.00%	21886	100.00%

Ward 53 Type of Dwelling	Black African		Coloured		Indian or Asian		White		Other		Total	
	Total	%	Total	%	Total	%	Total	%	Total	%	Total	%
Urban area	1238	40.40%	2314	94.30%	20	100.00%	2999	95.91%	40	83.33%	6611	75.88%
Tribal or Traditional area	0	0.00%	0	0.00%	0	0.00%	0	0.00%	0	0.00%	0	0.00%
Farm	1826	59.60%	140	5.70%	0	0.00%	128	4.09%	8	16.67%	2102	24.12%
Total	3064	100.00%	2454	100.00%	20	100.00%	3127	100.00%	48	100.00%	8713	100.00%

Ward 53 Geographical Type & Households	Formal Households		Formal Households in Backyard		Informal Households		Informal Households in Backyard		Other		Total	
	Total	%	Total	%	Total	%	Total	%	Total	%	Total	%
Urban area	5620	90.59%	113	97.41%	650	31.20%	209	78.57%	19	44.19%	6611	75.88%
Tribal or Traditional area	0	0.00%	0	0.00%	0	0.00%	0	0.00%	0	0.00%	0	0.00%
Farm	584	9.41%	3	2.59%	1433	68.80%	57	21.43%	24	55.81%	2101	24.12%
Total	6204	100.00%	116	100.00%	2083	100.00%	266	100.00%	43	100.00%	8712	100.00%

Ward 53 Type of Dwelling	Black African		Coloured		Indian or Asian		White		Other		Total	
	Num	%	Num	%	Num	%	Num	%	Num	%	Num	%
Formal Dwelling	1174	38.32%	1952	79.54%	15	75.00%	3037	97.15%	26	54.17%	6204	71.21%
Informal Dwelling	1719	56.10%	319	13.00%	4	20.00%	4	0.13%	12	25.00%	2058	23.62%
Formal Backyard Dwelling	5	0.16%	46	1.87%	0	0.00%	62	1.98%	3	6.25%	116	1.33%
Informal Backyard Dwelling	129	4.21%	128	5.22%	1	5.00%	1	0.03%	6	12.50%	265	3.04%
Other	37	1.21%	9	0.37%	0	0.00%	22	0.70%	1	2.08%	69	0.79%
Total	3064	100.00%	2454	100.00%	20	100.00%	3126	100.00%	48	100.00%	8712	100.00%

Ward 53 Access to Piped Water	Black African		Coloured		Indian or Asian		White		Other		Total	
	Num	%	Num	%	Num	%	Num	%	Num	%	Num	%
Piped (tap) water inside dwelling	840	27.42%	1799	73.34%	15	75.00%	3034	97.03%	24	50.00%	5712	65.57%
Piped (tap) water inside yard	246	8.03%	254	10.35%	2	10.00%	56	1.79%	9	18.75%	567	6.51%
Piped (tap) water < 200m away	891	29.09%	146	5.95%	0	0.00%	9	0.29%	2	4.17%	1048	12.03%
Piped (tap) water > 200m away	575	18.77%	216	8.81%	3	15.00%	4	0.13%	12	25.00%	810	9.30%
No access to piped (tap) water	511	16.68%	38	1.55%	0	0.00%	24	0.77%	1	2.08%	574	6.59%
Total	3063	100.00%	2453	100.00%	20	100.00%	3127	100.00%	48	100.00%	8711	100.00%

Ward 53 Energy or Fuel for Cooking	Black African		Coloured		Indian or Asian		White		Other		Total	
	Num	%	Num	%	Num	%	Num	%	Num	%	Num	%
Electricity	1095	35.74%	2028	82.67%	16	80.00%	2703	86.47%	30	62.50%	5872	67.41%
Gas	55	1.80%	31	1.26%	1	5.00%	402	12.86%	4	8.33%	493	5.66%
Solar	1	0.03%	0	0.00%	0	0.00%	3	0.10%	0	0.00%	4	0.05%
Other	1907	62.24%	388	15.82%	3	15.00%	10	0.32%	14	29.17%	2322	26.66%
None	6	0.20%	6	0.24%	0	0.00%	8	0.26%	0	0.00%	20	0.23%
Total	3064	100.00%	2453	100.00%	20	100.00%	3126	100.00%	48	100.00%	8711	100.00%

Ward 53 Energy or Fuel for Lighting	Black African		Coloured		Indian or Asian		White		Other		Total	
	Num	%	Num	%	Num	%	Num	%	Num	%	Num	%
Electricity	1148	37.47%	2059	83.94%	17	85.00%	3095	99.01%	33	68.75%	6352	72.92%
Gas	15	0.49%	8	0.33%	0	0.00%	11	0.35%	0	0.00%	34	0.39%
Solar	7	0.23%	9	0.37%	0	0.00%	9	0.29%	0	0.00%	25	0.29%
Other	1886	61.55%	374	15.25%	3	15.00%	8	0.26%	14	29.17%	2285	26.23%
None	8	0.26%	3	0.12%	0	0.00%	4	0.13%	1	2.08%	16	0.18%
Total	3064	100.00%	2453	100.00%	20	100.00%	3127	100.03%	48	100.00%	8712	100.01%

Ward 53 Energy or Fuel for Heating	Black African		Coloured		Indian or Asian		White		Other		Total	
	Num	%	Num	%	Num	%	Num	%	Num	%	Num	%
Electricity	720	23.50%	1792	73.05%	15	75.00%	2245	71.82%	20	41.67%	4792	55.01%
Gas	36	1.17%	11	0.45%	0	0.00%	122	3.90%	2	4.17%	170	1.95%
Solar	4	0.13%	3	0.12%	0	0.00%	7	0.22%	0	0.00%	14	0.16%
Other	1843	60.15%	379	15.45%	3	15.00%	53	1.70%	12	25.00%	2289	26.28%
None	460	15.01%	268	10.93%	2	10.00%	700	22.39%	14	29.17%	1445	16.59%
Total	3063	99.97%	2453	100.00%	20	100.00%	3127	100.03%	48	100.00%	8710	99.99%

Ward 53 Toilet Facilities	Black African		Coloured		Indian or Asian		White		Other		Total	
	Num	%	Num	%	Num	%	Num	%	Num	%	Num	%
None	325	10.61%	171	6.97%	3	15.00%	8	0.26%	1	2.13%	508	5.83%
Flush toilet (connected to sewerage system)	824	26.90%	1873	76.29%	12	60.00%	2807	89.80%	26	55.32%	5542	63.62%
Flush toilet (with septic tank)	40	1.31%	20	0.81%	1	5.00%	304	9.72%	1	2.13%	366	4.20%
Chemical toilet	8	0.26%	1	0.04%	0	0.00%	1	0.03%	2	4.26%	12	0.14%
Pit toilet with ventilation (VIP)	119	3.89%	49	2.00%	1	5.00%	0	0.00%	3	6.38%	172	1.97%
Pit toilet without ventilation	293	9.57%	61	2.48%	0	0.00%	0	0.00%	0	0.00%	354	4.06%
Bucket toilet	1425	46.52%	252	10.26%	3	15.00%	3	0.10%	12	25.53%	1695	19.46%
Other	29	0.95%	28	1.14%	0	0.00%	3	0.10%	2	4.26%	62	0.71%
Total	3063	100.00%	2455	100.00%	20	100.00%	3126	100.00%	47	100.00%	8711	100.00%

Ward 53 Refuse Disposal	Black African		Coloured		Indian or Asian		White		Other		Total	
	Num	%	Num	%	Num	%	Num	%	Num	%	Num	%
Removed by local authority/private company at least once a week	1208	39.43%	1420	57.86%	16	84.21%	2952	94.40%	28	57.14%	5624	64.55%
Removed by local authority/private company less often	134	4.37%	534	21.76%	2	10.53%	27	0.86%	6	12.24%	703	8.07%
Communal refuse dump	133	4.34%	16	0.65%	0	0.00%	30	0.96%	0	0.00%	179	2.05%
Own refuse dump or Other	1328	43.34%	189	7.70%	0	0.00%	108	3.45%	7	14.29%	1632	18.73%
No rubbish disposal	261	8.52%	295	12.02%	1	5.26%	10	0.32%	8	16.33%	575	6.60%
Total	3064	100.00%	2454	100.00%	19	100.00%	3127	100.00%	49	100.00%	8713	100.00%

	Ward 53 - Source of Water	
	Total	%
Regional/local water scheme (operated by municipality or other water services provider)	7638	87.67%
Borehole - Rain water tank	262	3.01%
Dam/pool/stagnant water - River/stream	114	1.31%
Water vendor	199	2.28%
Water tanker	100	1.15%
Other	399	4.58%
Not applicable	0	0.00%
Total	8712	100.00%

	Ward 53 - Main Language	
	Total	%
Afrikaans	19405	61.11%
English	1534	4.83%
IsiNdebele	35	0.11%
IsiXhosa	9995	31.48%
IsiZulu	62	0.20%
Sepedi	23	0.07%
Sesotho	143	0.45%
Setswana	118	0.37%
Sign language	110	0.35%
SiSwati	13	0.04%
Tshivenda	16	0.05%
Xitsonga	3	0.01%
Other	106	0.33%
Unspecified	0	0.00%
Not applicable	191	0.60%
Total	31754	100.00%

No of People	Ward 53 - Household Size	
	Total	%
1	1529	17.55%
2	1969	22.60%
3	1676	19.24%
4	1647	18.91%
5	837	9.61%
6	457	5.25%
7	263	3.02%
8	141	1.62%
9	78	0.90%
10+	114	1.31%
	8711	100.00%